

Summer 2023

# ReView

**peloton**  
well focused®

**PELTON PLATFORM**  
LEADING THE E&P JOURNEY  
TO THE CLOUD

## PEEK INSIDE FOR EXCITING INFORMATION ABOUT:

- Integrity & Reliability
- Wind & Solar Data Management Solutions
- Carbon Tracking & Reporting
- Material Transfers
- Peloton Frac
- Peloton & Snowflake

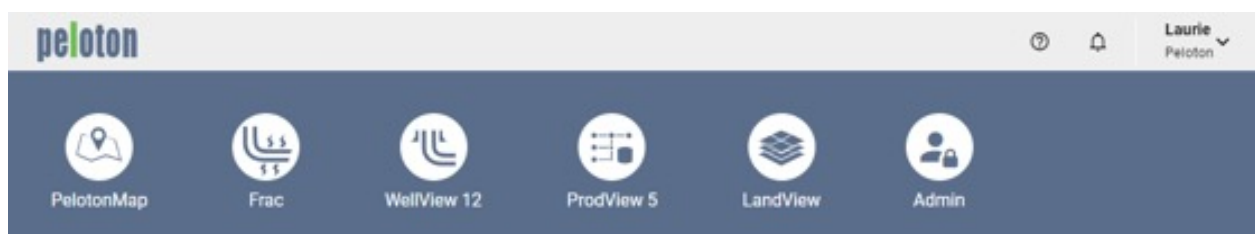
## PLATFORM v2 IS HERE!

**PLATFORM v2 IS THE NEWEST VERSION OF THE PELTON PLATFORM. IT PROVIDES AN UPDATED LOOK AND ADDED FEATURES:**

- Simplified user interface
- Direct access to the newest versions of Peloton applications
- Notifications for updates and other important Peloton information
- Direct access to files on your computer from the Peloton application, instead of uploading to the Platform first
- Admin functions accessed using an app instead of launching a separate menu
- Easy switch between corporate environments

### DATA API v2.1

As part of the Platform v2 release, a new version of the Web API is available. Data API v2.1 is used just with Platform v2. For more information on Platform v2 and Data API v2.1, see the Peloton Help Center.



# YOUR PELOTON HELP CENTER IN 2023

## BY THE NUMBERS



### Peloton Updates

Peloton news, release notes  
and service notifications



OVER **1000**  
PUBLISHED ARTICLES



MORE THAN **100,000**  
VIEWS SINCE  
RELEASE IN 2021



AROUND **7000** VIEWS  
EVERY MONTH



ALMOST **100** VIDEOS

## DO YOU FOLLOW US?

If you are an administrator of your company's users and products, we encourage you to subscribe to updates in the Help Center. You can follow any section of the Help Center to receive email notifications when a new article is added. In particular, this tool is useful for monitoring product releases, service updates, and general announcements.

## DO YOU HAVE A STORY TO TELL?

Do you have a story to share about how you use Peloton products? We'd love to hear from you! The Help Center is also available for gathering your ideas and solutions. Talk to your account representative if you have information you would like to see posted.

## HOW CAN WE IMPROVE?

We are under no illusions that the Help Center is perfect. Tell us what you think. If you like something, send a note to Support. If you don't like something, also send a note to Support!

# MANAGING EMISSIONS WITH THE PELOTON PLATFORM

Peloton's Platform offers a comprehensive solution for accurately measuring and documenting greenhouse gas volumes resulting from fuel, flare, and vent activities, eliminating the need for redundant data entry. Additionally, it offers intuitive visualization tools for in-depth analysis and streamlined reporting.

During a blowdown event, lease operators use ProdView Go to record data on a customized vent gas form. The data is consolidated with WellView data for emissions calculations in ProdView. Parameter and emissions data from both ProdView and WellView are available for reporting through the Peloton Ops dashboard.

Get your hands on our latest case study, "Managing Emissions with the Peloton Platform" by heading to our website and clicking on the **RESOURCES** tab. Don't miss out on the chance to delve deeper into the Peloton Platform's ingenious method of collecting and calculating emissions. Request your copy today!



# PELTON'S INTEGRITY AND RELIABILITY SOLUTIONS

A trio of Peloton applications provide asset integrity and reliability management solutions for your organization—ensuring safety, positive reputations, and profitability.

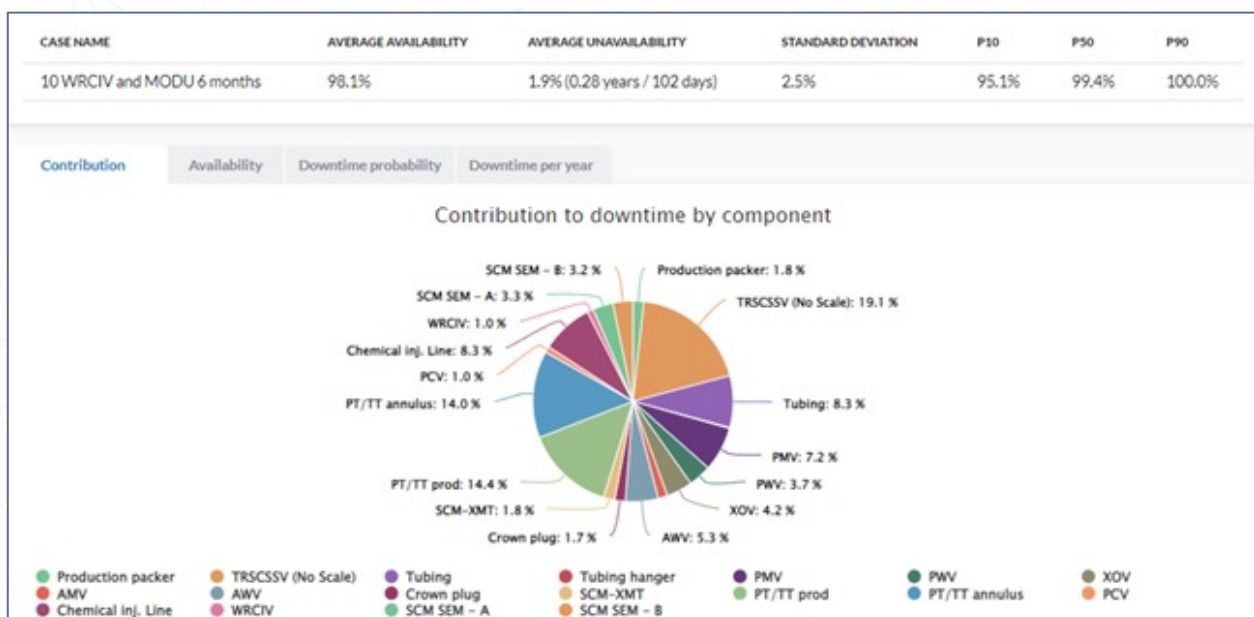
- **Peloton WRMS** (Well Reliability Management System) helps increase well uptime and safer operations by managing and reporting on well reliability.
- **Peloton WIMS** (Well Integrity Management System) allows you to achieve increased well uptime and safer operations by managing integrity.
- **Peloton RAM** (Reliability, Availability, Maintainability) offers an advanced flow allocation system to optimize discharge points and identify failures.

## PELTON WRMS

Peloton WRMS provides well performance analytics, combining historical data and reliability analyses with advanced RAM modelling and simulations.

## HIGHLIGHTS

- » Benchmarks for components selection and well configuration alternatives
- » Minimized well downtime
- » Optimized well maintenance planning related to OPEX and well availability
- » Benchmarks for well equipment performance across your assets and well types
- » Evaluation of well barrier elements for well integrity performance





# PELTON'S INTEGRITY AND RELIABILITY SOLUTIONS

## PELTON WIMS

Peloton WIMS is a global integrity solution to help operators reduce non-productive time due to well risk and failures, both onshore and offshore.

### HIGHLIGHTS

- » Overview of all your assets, both conventional and unconventional wells
- » Real-time dashboards and reporting
- » Compliance with NORSOK D-010, ISO 16530, OLF 117
- » Corrosion and cement log functionality
- » Cloud-based for speed and efficiency—no on-premise installation necessary

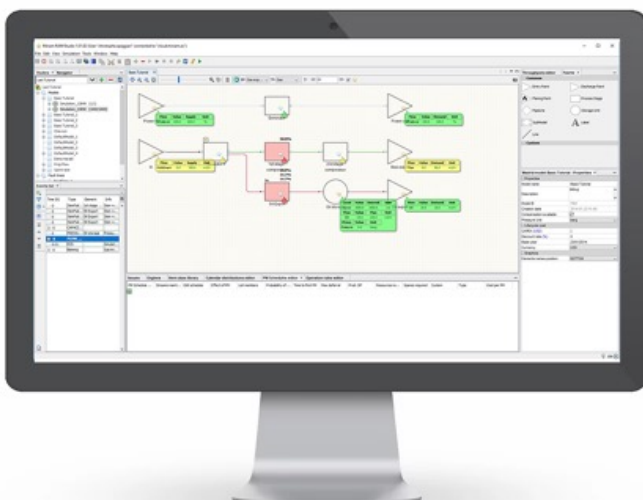


### HIGHLIGHTS

- » Maintenance planning
- » Decision support
- » Evaluation of asset performance
- » Production availability analysis
- » Location and elimination of bottlenecks
- » Design studies
- » Problem solving

## PELTON RAM

Peloton RAM provides sophisticated analysis tools to help you make the best choices to improve your system performance and your bottom line.



For more information on these tools to increase the reliability and integrity value from your well data, see [www.peloton.com](http://www.peloton.com).





# OPTIMIZING FRACTURE DRIVEN INTERACTIONS (FRAC HIT) ANALYSIS WITH **PELTON FRAC**

Don't let frac hits compromise your production or damage your surface equipment—with Peloton Frac, you can monitor and set alarms for your offsets in the same place as your frac data, eliminating distractions and complexity. Plus, you can easily aggregate and analyze frac and offset data in real time with clear, consistent channels and stage KPIs, allowing you to make real-time modifications to your frac spacing and design. Say goodbye to after-frac headaches and hello to streamlined, efficient operations with Peloton Frac.

## **WHAT IS A FRACTURE DRIVEN INTERACTION (FDI?) AND WHY DOES IT MATTER?**

FDI or Frac Hit is when pressure, fluid, or proppant from a completion or injection in one well affects an adjacent well. This can cause stress alterations, less efficient fractures, and production losses in both wells. In extreme cases, it can result in equipment damage or blowouts.

**peloton** Frac<sup>TM</sup>  
**for all your data**



## HOW DO WE MONITOR AND PREVENT FDIS?

### MONITOR

We monitor for FDI during fracturing by checking pressures in the Fracture Planning Zone or twice the half length of the fracture. We can connect wells to the data van or use SCADA/third party instruments for monitoring. However, SCADA may not provide reliable data for high-risk wells. Offset well monitoring is an option, wherein third-party transducers are installed on the casing and tubing of the offsets. These transducers have internet connectivity and send data at 1-15s intervals. They can be installed days to hours before fracturing begins.

### PREVENT

To prevent FDI, gather accurate data on seismic, lithology, frac modeling, and completions history. Shut down high-risk wells and nearby drilling operations. Natural fractures increase communication event risks. Modify frac spacing or parameters in real-time based on pressure responses to maximize acreage drainage.

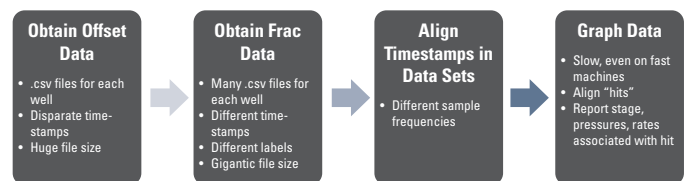
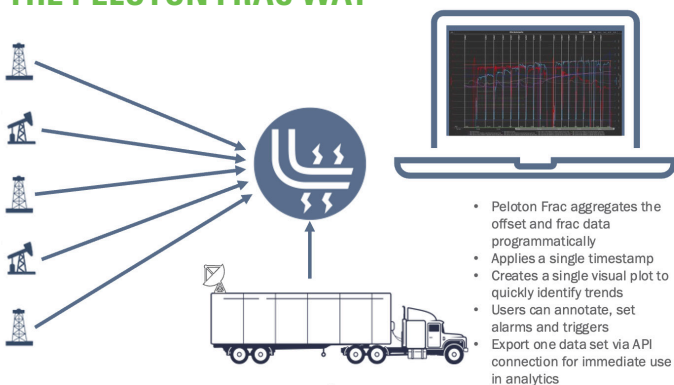
## WATCH THE FRAC? OR WATCH THE OFFSETS?

Monitoring both frac and offset data is crucial for safe and efficient operations, but it can be distracting with 40+ offsets and two separate portals. This can lead to severe incidents, causing financial losses and requiring modifications to the frac design. Identifying the stage responsible for a hit is also difficult with disparate timestamps.

## THE STORY IN THE PRESSURES – THE OLD, TIME-CONSUMING WAY

Identifying offset pressure changes can improve accuracy in reservoir and frac modeling and help explain geometry and drainage. However, this process is traditionally tedious and time-consuming, requiring data wrangling that few operators have time for without a dedicated data scientist or interns. In many jurisdictions, it is also necessary to report any identified issues to regulators.

## THE PELOTON FRAC WAY



⤴ Traditional Process for Offset Analysis – this can day hours or days of a skilled professional's time

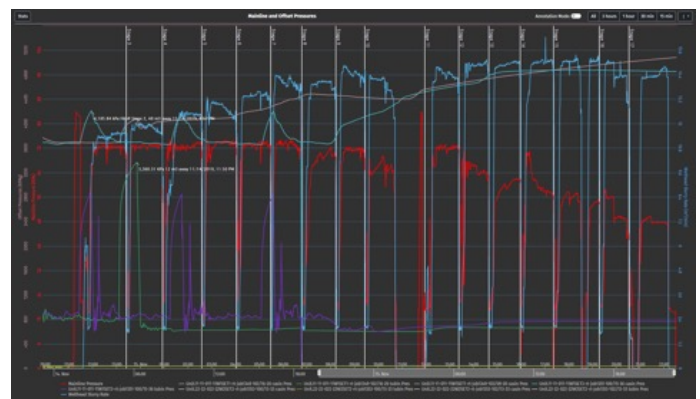
⤵ Peloton Frac—your one stop completions portal—Peloton Frac combines multiple completions data feeds into one convenient portal

## SAVE TIME, REDUCE DISTRACTIONS

With Peloton Frac, you can easily monitor your offset data in real time, alongside your pumpdown, wireline, and CT milling data. This means that all the information you need is properly tagged and on the same timestamp, making it easier to make informed decisions. Peloton Frac automatically creates a plot for all users containing offsets, ROC information, wellhead slurry rate, and mainline pressure. You can even customize your own plots and save your templates. Additionally, users can set alarms and rate of change criteria in Peloton Frac. By using one portal for all your data needs, your completion team can quickly analyze the information and export pertinent, mapped data sets. Pull by stage, time period, or decimate for connecting to other BI tools. This eliminates the workload of getting to clean, analysis-ready completions data.

## REAL TIME MODIFICATIONS

With Peloton Frac, you'll have access to real-time pressure data that will lead to better decisions and, ultimately, better wells. Whether you're using the plots to guide modifications based on experience or optimizing spacing and design, Peloton Frac has got you covered. Reach out to your account manager or [info@peloton.com](mailto:info@peloton.com) about offset monitoring in Peloton Frac today!



Peloton Frac Default Offset Monitoring Plot – when Peloton Frac detects the presence of offset channels in the data feed, it creates an offset plot with a global timestamp. Users also can create custom rate-of-change or threshold alarms. This data is also available via API in csv or JSON.

# MATERIAL TRANSFERS MADE SIMPLE

## GET READY TO SAY GOODBYE TO MIGRAINES FROM CHASING WELL SITE INVENTORY.

WE'RE EXCITED TO ANNOUNCE THAT A SEAMLESS NEW FIELD INVENTORY  
MANAGEMENT SOLUTION IS COMING SOON. STAY TUNED FOR ALL THE DETAILS!

Get ready for a game-changing feature in the Peloton Well Data Lifecycle! Our upcoming material transfer records will revolutionize the way you manage bulk items, equipment, tubulars, and waste between different sites. With Peloton's innovative material transfer add-in, you'll breeze through the process with step-by-step guidance and automatic cost and inventory tracking.

### BENEFITS

- Automated record transfer
- Reduced data entry time and error
- Streamlined guided system
- Allocated costs
- Integrated into Peloton's Well Data Lifecycle

Say goodbye to tedious data entry and hello to unparalleled efficiency. The Well Data Lifecycle and our one-of-a-kind add-in will take your workflow to new heights, allowing you to transfer materials at the click of a button. Save valuable time and increase productivity by integrating the material transfer add-in into your daily routine with Peloton.

Material Transfer - Enter Transfer Details

General	Sent
Material Transfer Number 54857-X	Date Sent 6/22/2023
Type <input type="radio"/> None <input type="radio"/> Bulk Transfer <input type="radio"/> Tubular Trans <input type="radio"/> Equip Trans <input type="radio"/> Waste Disposal	Location Sent To
Sub Type Contaminants	Reason Shipped Storage Availability
Description	Shipping Carrier Joe's Trucking
Status In progress	Ship Carrier Name John Smith
Prepared By	Ship Carrier Ref No 348111
	Carrier Phone 123-456-7891
	Carrier Unit
	Next Exit



# RENEWABLE WIND & SOLAR ENERGY DATA MANAGEMENT FROM PELOTON!

Introducing the perfect partnership that will revolutionize how energy organizations manage their land agreements. LandView and Peloton Map have teamed up to provide you with the tools to streamline your land management process at scale. Easily track agreements on both private and public land and manage everything from the developmental to the operational phases of a project. With the ability to oversee all standard and unique project obligations and manage your agreements, you will have all the resources needed to ensure your projects run smoothly. Stay ahead of the game and experience the benefits of this powerful partnership today.

Our platform offers seamless surface title and ownership workflows, alongside integrated landowner communications and stakeholder management. With our project management tools, you can stay organized and on track. Plus, enjoy fully integrated mapping and geospatial visualization with a growing library of Public Data Layers. We support global agreements and jurisdictions, both onshore and offshore, and our platform is scalable for different environments.

## USE LANDVIEW TO MANAGE:



TITLE CHAIN



PAYMENTS AND OBLIGATIONS CALENDARS



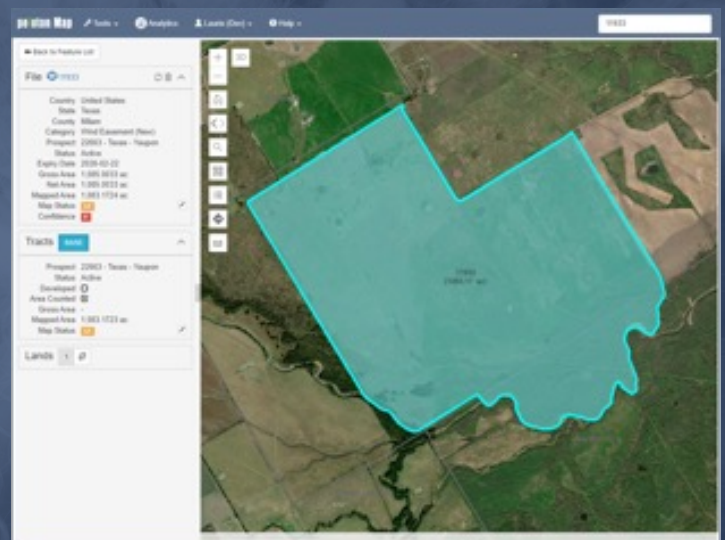
ENVIRONMENTAL DUE DILIGENCE



SURFACE RIGHTS

- Track agreements on private or public land
- Manage construction, MET (meteorological evaluation tower) overhang and transmission easements
- Oversee standard and unique project obligations
- Create project specific workflows
- Manage power purchase agreements, interconnect agreements and tax incentives
- Intuitive surface title and ownership workflows
- Integrated landowner communications and stakeholder management
- Project management tools
- Fully integrated mapping and geospatial visualization with a growing library of Public Data Layers
- Support of global agreements and jurisdictions
- Onshore and offshore
- Scalable for different environments

## LANDVIEW® AND PELOTON MAP® JOIN FORCES TO GIVE ENERGY ORGANIZATIONS THE TOOLS TO MANAGE LAND AGREEMENTS AT SCALE.



**Contact your account manager for a demo and start managing your Renewable Wind & Solar Energy Data today!**

# PELTON COLLABORATES WITH TEXAS A&M UNIVERSITY TO TEACH DATA MANAGEMENT & ANALYTICS TO FUTURE PETROLEUM ENGINEERS

Peloton and Texas A&M University collaborated on content for two courses within the university's Petroleum Engineering curriculum. This initiative is part of Peloton's mission to empower future petroleum engineers and other key players in the industry.

Starting in Fall 2022, Peloton began providing four hours of educational content about the role of data management and analytics in the petroleum industry for better decision-making. The content was incorporated into the Intro to Petroleum Engineering (PETE 201) course.

Peloton is also a Capstone Project Sponsor for Interdisciplinary Data Analytics Practicum (STAT 483) and a Peloton representative was available to provide guidance and training for senior-level students. The course STAT 483 is a required part of the coursework requirements for the Certificate of Data Analytics for the Petroleum Industry, a specialized certification offered to select students within Texas A&M's colleges of engineering, science, geosciences and Mays Business School.



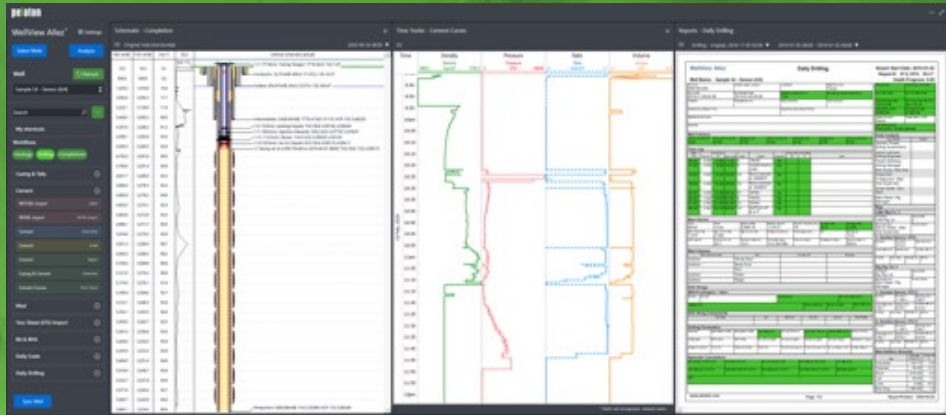
**TEXAS A&M UNIVERSITY**

By sharing this content, Peloton aims to shape the future generation of petroleum engineers, providing an opportunity for students to learn from and gain experience with real-world scenarios through utilization of industry-leading software solutions. We anticipate this is just the beginning of our collaboration, and we are committed to making this university partnership a success, which is why we are working closely with the professors to provide any additional resources or support that they need.





# OIL & GAS - EXPLORATION & PRODUCTION RELIES ON WELL DATA FROM PELOTON POWERED BY SNOWFLAKE



What does it mean to be ‘Powered by Snowflake’? For Peloton, an industry leading Oil & Gas software solution, it has meant providing customers with fast, secure data insights while ensuring that they’re leveraging a modern data infrastructure that is flexible and scalable.

Lately, geopolitical turmoil and inflation have demonstrated once more how dependent the global economy is on oil & gas. A big challenge remains reliable access to sustainable and affordable energy for everybody on this planet both today, and for the next generations to come. Oil and gas play a crucial role in today’s energy mix.

To extract from developed reservoirs, oil and gas experts drill wells in various shapes. Depending on the well type, such a project may cost hundreds of thousands to millions of dollars. The return on this investment depends on how the operator masters the subsequent production, ensuring maximum safety and the lowest possible risk to the environment. This is not an easy task. Typically, well output declines at an average rate of 20% annually, according to Rystad Energy. Yet with service activities, workovers and the right ongoing performance optimisation, wells remain in operation over an average of 20-30 years and beyond.

Peloton holds information on nearly 80% of wells from over 600 clients worldwide. Their clients rely on complete, accurate well data files to keep track of changes and document operational data throughout the well lifecycle from planning to plug and abandon. Each well is described by massive amounts of data. Peloton’s cloud-based solution, WellView Allez, offers many benefits: a sophisticated data model, real-time integration capabilities, trusted data analytics, and comprehensive visualization that support their customers managing their workflows.

To go further and action the right insights for optimizing production, APIs are insufficient as data sets are too large for mass data extracts. Thus, Peloton shares critical well data exclusively via Snowflake under strict governance. Configurable privacy schemata at a fine granular level ensure that data sharing is secure and privacy is maintained.

In cases where Peloton customers are already on their own Snowflake journey, they may include well data from Peloton without copy or clone in their own instance and combine it for example with sensor data; measurements about downhole pressure, temperature, strains, and acoustics are used to monitor reservoir conditions in near real-time. Conditions change over time and in combination with well lifecycle data, advanced analytics reveals patterns and supports decision making—such as when to adjust extraction volumes and production allocation, or to balance intervention cost with well integrity and risk. More data adds value when handled efficiently at scale.

Both customers and Peloton benefit from Snowflake’s best in class performance and scalability for any workload. Storage is optimized, compute clusters are available in just under a second, and charges occur only based on what is actually used. It allows Peloton’s R&D and product teams to spend more quality time on business relevant topics, like continuously enhancing functionality for geological prognosis, well planning, regulatory reporting, drilling operations, geology operations, completions, or well operations. WellView Allez is powered by Snowflake on Microsoft Azure.

<sup>1</sup>according to the Canadian Association of Petroleum Producers (CAPP)

<sup>2</sup>a quote from Peloton, see also Peloton celebrates 30 years!

**To gain a deeper understanding of the powerful alliance between Peloton and Snowflake, we encourage you to reach out to your account manager today. We don’t want you to miss out on the opportunity to be a part of this transformative collaboration!**



## PELTON IS PROUD TO SPONSOR TWO PROFESSIONAL GOLFERS!

Peloton is proud to sponsor **Ryann O'Toole** and **Taylor Montgomery**! Ryann is competing on the LGPA Tour and is a recent winner of the Trust Golf Women's Scottish Open. To follow along on Ryann's Tour visit <https://www.ryannotoolegolf.com/>.

Taylor is competing on the PGA Tour and recently finished in the Top 50 at the Korn Ferry Tour. To follow along on Taylor's journey visit <https://www.pgatour.com/player/55789/taylor-montgomery/career>.



## PELTON'S 2023 CONFERENCE IS JUST AROUND THE CORNER!

OCTOBER 23-25 | BARTON CREEK RESORT & SPA NEAR AUSTIN, TEXAS



We invite you to join us at our 2023 conference, where you'll discover the latest technological advancements within the Peloton Platform – Leading the E&P Journey to the Cloud.

This year, we are excited to offer additional training opportunities around data storage, AI and analytics from Peloton, Microsoft and Snowflake.

This conference is perfect for your D&C, production, land, well integrity, renewables and alternatives, IT, infrastructure, security, analytics and developer teams, or anyone seeking to learn more about Peloton and Energy Data Management. Plus, learn about Peloton's latest offerings: Peloton Map, Public Data, and Integrity & Reliability.

And, there is no fee to attend the conference! To learn more and to register, contact [communications@peloton.com](mailto:communications@peloton.com).

## DON'T GET LEFT IN THE DARK. SIGN UP FOR PELTON NEWS TODAY!

Get all the juicy details about what's happening at Peloton. Be the ultimate insider and stay ahead of the game with exclusive access to product webinars, training courses, events, and so much more.

[SIGN UP FOR PELTON NEWS](#)



[www.peloton.com](http://www.peloton.com)  
[info@peloton.com](mailto:info@peloton.com)

**HELP DESK** 1.888.PELTON  
[sales@peloton.com](mailto:sales@peloton.com)

[support@peloton.com](mailto:support@peloton.com)

**ABERDEEN** +44.1224.560.580  
**BEIJING** +86.153.3211.7123  
**HOUSTON** 1.281.394.2151

**ALMATY** +7.701.383.8688  
**CALGARY** 1.403.263.2915  
**JAKARTA** +62.21.570.3188  
**TRONDHEIM** +44.1224.560.580

**AMSTERDAM** +31 (0) 20.7470.106  
**DENVER** 1.720.826.1204  
**KUALA LUMPUR** +60.38.920.1714