

Winter 2022

ReView

peloton
well focused®

PELTON PLATFORM
LEADING THE E&P JOURNEY
TO THE CLOUD

HIGHLIGHTS

- Celebrating 30 Years
- WellView Allez v12 Data Model
- Peloton Operations Center Coming Soon!
- WellView Allez v12 Time Log Automation
- Peloton Headquarters has Relocated
- Peloton's SOC Report Update
- Well Reliability and Beyond: Turning Failures into Success
- Peloton Platform Provides the Tools to Build a Sustainable Future One Renewable Energy Organization at a Time
- Have You Visited the Peloton Help Center Lately?
- Automating AER DDS Submission with Peloton Frac
- University Training Courses & Summer Internships

JOIN US IN CELEBRATING OUR 30-YEAR ANNIVERSARY!

CELEBRATING
30
YEARS

From the very beginning, we've carefully managed our own growth while refusing to compromise the quality standards of our software and service that are fundamental to both Peloton's future and our clients'. This is a responsibility we take seriously.

Over time, we've grown from a two-person startup in 1991 to a global software company with subsidiaries in all regions of the world.

Today, the Peloton Platform energizes the oil and gas digital transformation through mobility, automation, and data integration by providing fully integrated well data lifecycle, production data lifecycle and land data management solutions. Over 600 oil and gas clients worldwide rely on Peloton technology to equip their stakeholders with the tools and information necessary to manage, simplify and optimize their operations.

Together, Pelotonians around the world will continue to tackle exciting challenges for years to come with their powerful history and clear direction. For a more in-depth peek at Peloton's history, visit www.peloton.com.

WELLVIEW ALLEZ V12 DATA MODEL

WellView Allez v12 is the latest release on the Peloton Platform. This major release builds upon concepts introduced in WellView Allez v11, incorporates new technology, and contains significant data model enhancements.



WellView Allez v12 will be available for all Peloton Platform clients in Q1 2022.

HIGHLIGHTS OF THE DATA MODEL ENHANCEMENTS

WellView is the source of record for well data for our clients. As such, we continue to enhance our model to support better data and analysis. More than 30 years of experience in data modeling is incorporated into the v12 model.

Job Time Log

The Daily Time Log is now the Job Time Log. Job Time Log supports Start Date and End Date entry, rather than Duration.

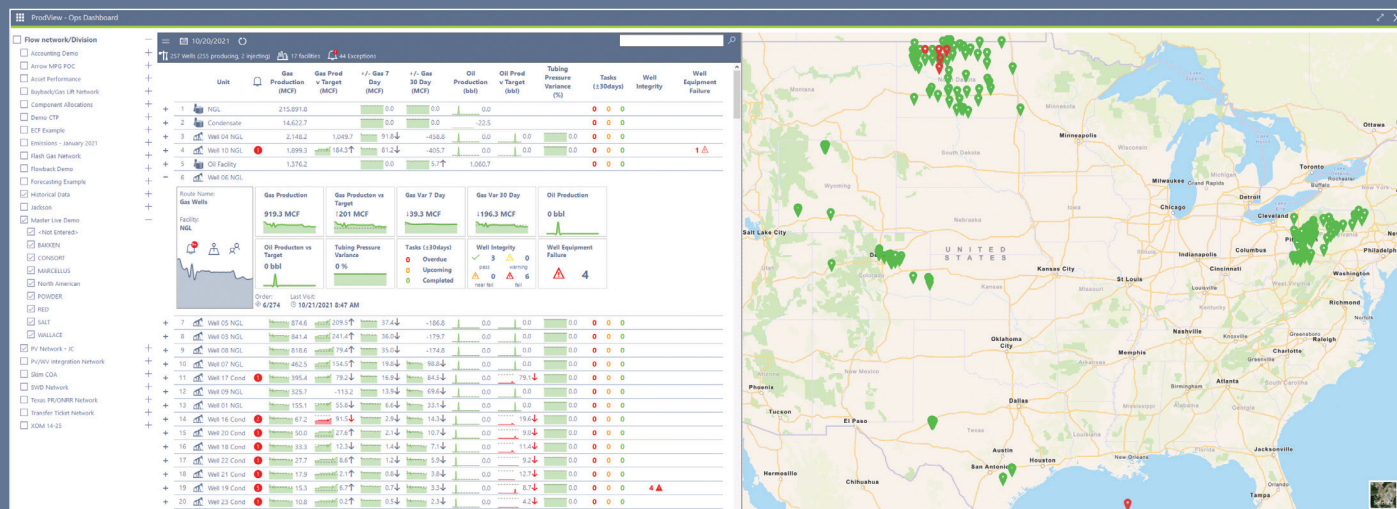
Benefits:

- Easier data entry for non-continuous activities, such as pad/batch operations
- Easier to track smaller time intervals (duration of minutes and seconds rather than hours)
- Breaks the habit of entering inaccurate 15 minute intervals
- Necessary for **TIME LOG AUTOMATION!**

Stay tuned for WellView Allez v12 webinars and contact your Peloton representative for more information.

SUBJECT AREA	CHANGES TO THE DATA MODEL
Other Time Logs	Similar to the Time Log changes, Other Time Logs (formerly Offline Time Log) now supports Start Date and End Date entry, rather than Duration.
Daily Operations to Job Operations	Mud, Fluids, Emissions, Discharges, Offshore were moved from under the Daily Operations table to the Job. Date fields were added so the records can be related to the daily reports. This change was made to support integration and automation.
Well Integrity	Annulus & Annulus Fluids describe the annulus and define inner and outer boundary strings. Equipment Tests has been expanded to include more detail for Surface Valve, Subsurface Valve, Annulus Tests.
Wellhead and Xmas Tree	Install and removal dates have been added to Components and Sub Components.
Completions Flowback	New tables and fields are aligned with the ProdView flowback model and client requests. The flowback data is stored in tables rather than BLOB.
Plug Drill Outs	The completion frac plug drill out model has been enhanced.
Wireline	New tables and details were added to track wireline operations.
Control Lines	Enhancements support multiple control lines per component. You can also model control lines that originate in one tubing component and terminate in another tubing component/ wellhead component.
Multiple Rig Dates	For batch/pad operations, the same rig may be on location multiple times. This new multi dates option allows you to model multiple Start and End dates for the same rig.
Interval Problem/NPT	A category list has been added. This is a major category, a higher-level grouping than the Typ and TypDetail fields.
Directional Survey	The link from Wellbore to Actual Survey and Proposed Survey is no longer required. The functionality has been replaced with a combination of a new field to specify that the survey is Proposed/Actual and a new field to indicate what should be used for calculation purposes. Additionally, Latitude, Longitude, UTMx, UTMyl fields have been added to Survey Data.
Elevation History	The link from Well Header to Other Elevation is no longer required. The functionality has been replaced with the Active setting.

PELTON OPERATIONS CENTER COMING SOON!



Peloton is committed to continuously developing new technology and solutions, and our customers rely on our technology to equip them with the tools and information necessary to manage, simplify, and optimize their operations.

The new Peloton Operations Center complements our Production Data Lifecycle Solution. Consisting of the Operations Dashboard, Tasks, Forms and Emissions Management components, this data management initiative goes beyond volumetric data to include customizable workflow-based tools around field operations management.

Peloton Operations Center is a fully integrated Peloton Platform solution designed to proactively help identify issues and prioritize wells and facilities based upon the data managed in ProdView, WellView, and SiteView. Exceptions create alerts, and tasks may be scheduled and delivered to the field personnel using ProdView Go.

This collaboration tool also adds value as a Field Operations Management Tool by:

- Creating a collaborative environment to improve communication between head office, field office, and field personnel
- Assigning personnel responsibilities and communicating those to the field
- Directly communicating with assigned personnel from within the application
- Identifying and prioritizing assets to focus on, based on selected variables and exceptions
- Creating exceptions and alerts from user-defined parameters
- Visualizing selected assets on a map and list view

Continued on Page 4

Continued from Page 3



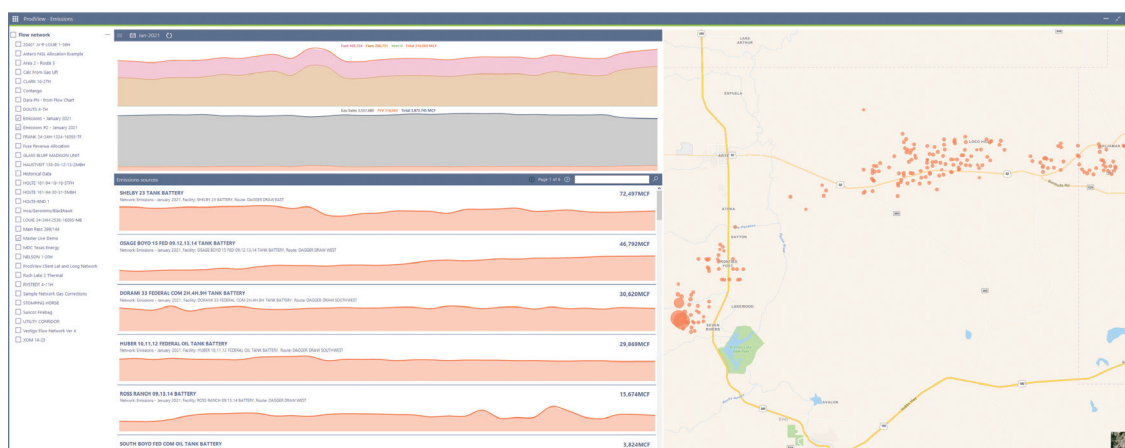
1. Tasks are communicated to ProdView Go.
2. Field personnel complete the assigned tasks.
3. The finished tasks are communicated back to the head office.

- Display flexible task type and sub-type definition (preventative maintenance, operations, compliance, inspection, HS&E, ESG, etc.)
- Schedule single or recurring events
- Assign tasks to routes, wells, facilities, or pieces of equipment
- Communicate tasks to the field staff via ProdView Go
- Attach operational forms to tasks and communicate those to the field
- Visualize tasks in a calendar or list view
- Filter tasks by physical location, task type, priority, or status
- Create forms for operations, compliance, inspection, HS&E, ESG, etc.
- Communicate tasks to field personnel, and view completed forms in head office

Accurate measurement of fuel, flare, and vent emissions presents unique challenges for any organization, yet it is vital for effective and consistent regulations. With the Peloton Operations Center, you can proactively identify issues and reduce costs.

- Customize corporate hierarchy to allow targeted asset focus
- Monitor emissions in gas volume, methane equivalent (mcf, tonnes or intensity) or CO2 equivalent (tonnes and intensity)
- Display cumulative emissions for a selected time frame on Bubble Map
- Navigate directly to the Production Monitor to plot individual meters or emissions
- Rank physical locations based upon amount of emissions

To learn how the Peloton Operations Center can help you simplify your operations, contact your Peloton representative or email info@peloton.com.



WELLVIEW ALLEZ V12 TIME LOG AUTOMATION

The Time Log is the operator's detailed breakdown of activities that occur during the job. Examples are:

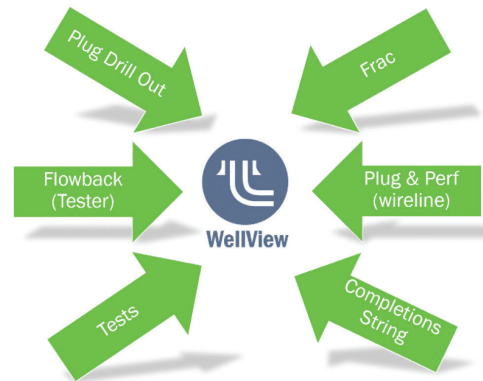
- Drilling activities such as drilling, casing, cementing
- Completions activities such as perf, plug, frac

The activities are coded; the start & end time and depths are tracked. Typically, a comment is also populated to provide a summary of the event.

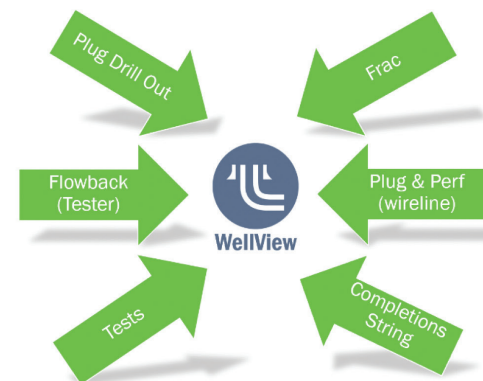
The details in the Time Log are informed by other data sets populated in WellView. For example, for the drilling activity, the operator summarizes drilling parameters for the interval, the run tally for casing, and the cement job for cement.

You can manually import or enter the other data sets.

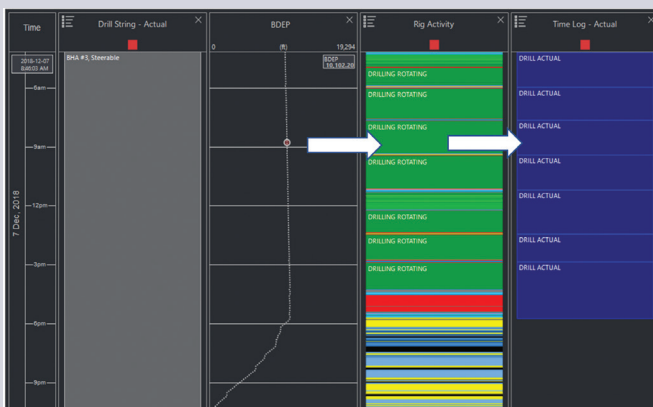
Example: Imported Drilling Data Sets



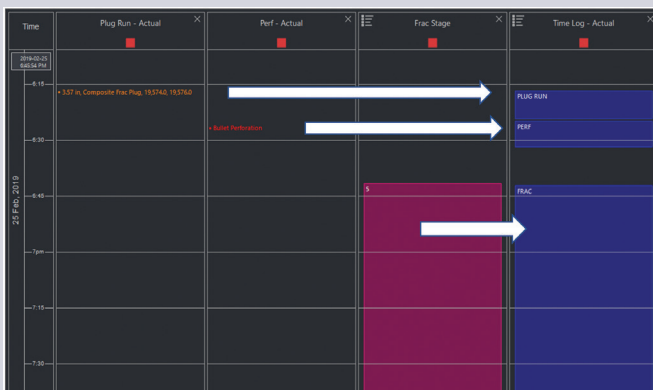
Example: Imported Completion Data Sets



Example: Drilling activities derived from imported rig sensor data



Example: Plug and Perf activities populated from imported wireline details; Frac activities populated from Peloton Frac



One of the compelling reasons to change the v12 Time Log model was to support automation and reporting by exception.

We are actively piloting with clients. Stay tuned for more exciting developments!

PELTON HEADQUARTERS HAS RELOCATED TO EIGHTH AVENUE PLACE IN DOWNTOWN CALGARY!



NEW ADDRESS:
3300 525 8 AVE SW, CALGARY, AB T2P 1G1

Peloton is excited to announce that we have moved our headquarters to Eighth Avenue Place in Downtown Calgary, featuring an innovative, larger office space to accommodate increasing growth within our organization. Our head office includes software development, product development, our Peloton Platform/Microsoft Azure team, our worldwide help desk, plus sales and client support services.

Since 1991, Peloton has grown our footprint to offer superior global support and better serve our clients' needs. In addition to our company headquarters in Calgary, Peloton has office locations in Aberdeen, Amsterdam, Beijing, Brisbane, Denver, Houston, Jakarta, Malaysia, Moscow, and Trondheim.

PELTON'S SOC 2 AND SOC 1 TYPE 2 REPORTS ARE AVAILABLE!

Safeguarding our customers' data is of the utmost importance to Peloton. We use best practices and industry standards to achieve compliance with industry-accepted frameworks, which in turn helps our customers meet their own compliance standards.

SOC (System and Organization Controls) for Service Organizations reports are designed to help organizations such as Peloton build trust and confidence in the solutions they provide, and detail controls related to those solutions through a report by an independent CPA (Certified Public Accountant).

Peloton undergoes routine audits to receive updated SOC 2 reports, and SOC 1 reports for our Well Data Lifecycle, Production Data Lifecycle and Land Data Management solutions. The latest reports can be requested by contacting your Peloton Account Manager.



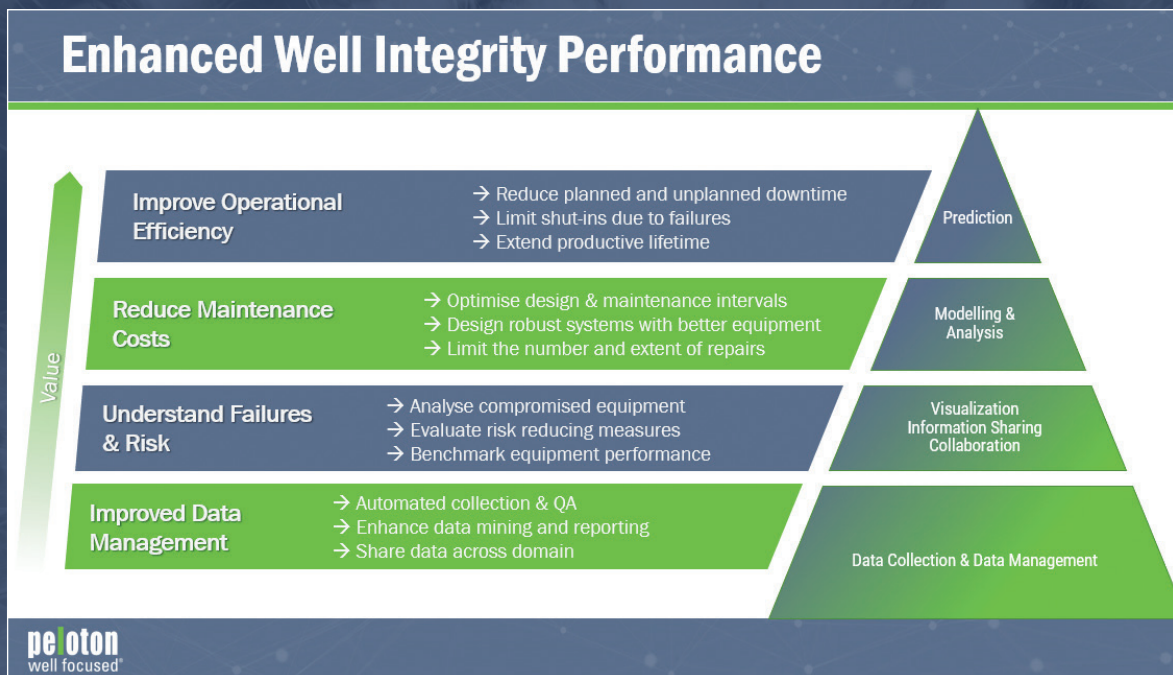
FOR MORE INFORMATION, REACH OUT TO YOUR PELTON ACCOUNT MANAGER OR EMAIL INFO@PELTON.COM.

WELL RELIABILITY AND BEYOND: TURNING FAILURES INTO SUCCESS

We had an overwhelming turnout for our recent webinar series, “Well Reliability and Beyond.” If you missed this epic event, the webinars were recorded and are now available in Peloton’s Help Center for all clients.

If your organization is focused on becoming more proactive with regards to maintaining reliable well operations, explore the webinar recordings outlined below to learn how you can manage, report, and analyze well reliability data to make more informed, better business decisions.

- Beyond Failure Tracking in WellView Allez
- Well Reliability: A Key Enabler for your Well Performance Optimization
- Allez Failure Workflows
- Well Integrity: Workflows for Improved Efficiency
- Failure Prioritization Process
- Building Custom Loaders
- Workover Scheduling: A RigView Story



For more information or to request a demo about Well Reliability Data from Peloton, contact your account manager or email info@peloton.com.



PELTON'S PLATFORM PROVIDES THE TOOLS TO BUILD A **SUSTAINABLE FUTURE** ONE RENEWABLE ENERGY ORGANIZATION AT A TIME

Benefitting the planet can be good for business. That's the mission of the Peloton and Microsoft partnership. The International Renewable Energy Agency (IRENA) lays out an energy transformation pathway that creates a clean, sustainable energy future that includes \$108B in annual investment in renewables, an opportunity for 2.3M renewable jobs each year and 485 GW of solar generation by 2030 and 445 GW of wind generation.

While this is an admirable goal, the initiative will need lots of land—and that means lots of land agreements which presents a very unique challenge. Together, Peloton and Microsoft will aid in building this sustainable future while also solving this classic energy industry challenge. The Peloton Platform solves this very important issue, providing energy organizations with accessible tools to easily manage land agreements at scale.

THE ISSUE: DIFFICULTY MANAGING LAND AT SCALE

Many land agreements for energy production in the United States are for private land. U.S. Landowners have leased to energy companies for hundreds of years and many now demand environmental compliance in their agreements. Additionally, just one energy project can span many separate agreements simultaneously, creating a very complicated process.

Completing the transition to renewable energy in North America will require using vast areas of private land and generate millions of new private agreements for the renewable energy industry. To reach their goal to achieve a more climate-stable future, these organizations will require an agreement management solution that can scale on demand.

Additionally, managing land agreements at scale creates complexity for renewables. Wind, solar, and geothermal production are not location-neutral. Operations must be built in areas where those resources are most abundant.

Private energy agreements can contain dizzying complexity, and often include:

- Compliance with surface, mineral, and air rights agreements
- Chain of title issues
- Complex calendars for payments and other obligations
- Protections for endangered species and migrating wildlife
- Water use compliance

SOLUTION: THE PELOTON PLATFORM

The Peloton Platform delivers an enhanced user experience with the LandView and Peloton Map offerings. LandView, a cloud-first SaaS data management solution developed to run exclusively on Microsoft Azure, and Peloton Map work together to layer information about land agreements with any other dataset, public or private, and surface easy-to-understand insights to facilitate strategic planning, operations, and intra-company communications. Mapping occurs in real-time as data enters the system.

Together, LandView and Peloton Map give renewable energy organizations the insights they need to manage land agreements at scale and leverage agreement data to make decisions quickly. It allows businesses to incorporate diverse datasets and report integrated data with accurate maps.

Energy organizations can also use the platform's powerful and intuitive query tool to filter data using terms familiar to their employees, and receive customized reports and maps that can answer important questions like:

- How much available acreage has been developed?
- How many agreements and assets exist in a specific county or state?
- Which agreements will expire soon?
- What payments are coming due?

ONE TOOL TO SIMPLIFY COMPLEX DATA

Older legacy data systems often cannot incorporate land agreement data with the numerous and diverse datasets that energy companies maintain—let alone leverage that integrated data into intelligent action. LandView and Peloton Map bridge this gap.

The Peloton Platform is secure, optimized, scalable and is supported 24/7, 365 from North America. With the Platform, energy companies can:

- Manage payments and obligations in a timely manner to prevent unnecessary or accidental penalties
- Automate acreage inventory updates to receive real-time reporting data
- Interface with third-party systems to automate data hand-offs and eliminate human error
- Stop downloading software updates and maintaining installations
- Integrate existing GIS infrastructure with the Peloton Platform
- Manage land mapping with confidence
- Simplify land use decision-making with rich and accurate visualizations on dynamic maps

Renewable energy organizations preparing to deploy at scale in the U.S. and Canada need a complete land data management system capable of meeting today's challenges and the challenges of the future. For one customer, one of the largest independents in the United States, had over 400K land agreements covering 25M acres of land, 900K owners, 135K wells and over 700K+ documents to keep up with. Implementing land agreement data management on Peloton's cloud-first SaaS solution gave them the increased visibility they needed and was a game changer.

Contact us today at info@peloton.com to learn how Peloton and Microsoft can help you manage and track land agreements at scale to monitor and grow your renewables business.

HAVE YOU VISITED THE PELOTON HELP CENTER LATELY?

The Peloton Help Center was released in January 2021 to Peloton Platform clients. It has now grown to over 600 knowledge base articles to provide you with resources to use and manage Peloton applications.

We now have videos!

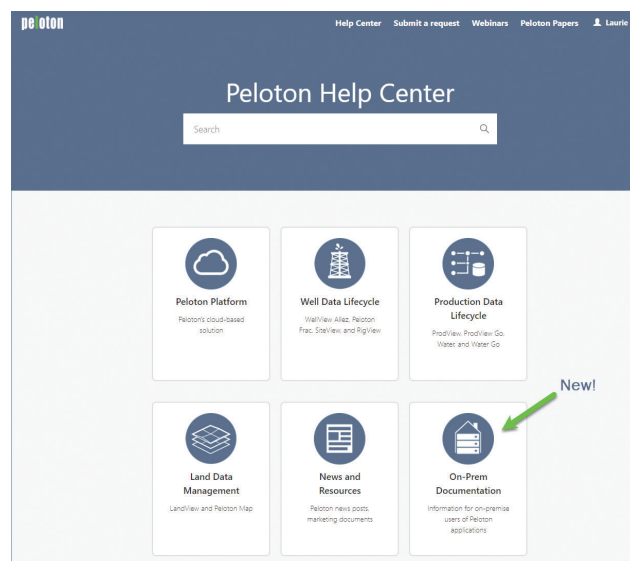
You can play and listen to recorded webinars and instructional videos directly from the applicable articles.

On-Prem users can now access the Help Center!

On-prem users who previously had access to Premium Support can access the Peloton Platform and launch the Help Center.

Within the Help Center, on-prem and Platform users can access the AppFrame 4.2 Administrator Guide from a link, and can contact Peloton Support as well as view and manage support tickets.

We are always looking for your thoughts on the Help Center. Is there information you are looking for? Let us know! Send a note to support@peloton.com.



ENHANCE YOUR PELOTON EXPERIENCE!

In addition to the Help Center, Peloton offers other avenues to stay informed, such as:

»» PELOTON PRODUCT NEWS EMAILS

Product News emails allow Peloton product managers to communicate with our clients and peers on a regular basis. We use this forum to announce maintenance releases, new client case studies and technical papers available, upcoming webinars and training opportunities, plus to share tips and tricks and best practices. Simply sign up by going to [Peloton.com > News & Events > Sign Up](https://peloton.com/news-events/sign-up) for Product News.

»» PELOTON PRODUCT WEBINARS

Peloton hosts educational product webinars on a regular basis. Go to [Peloton.com > Services & Support > WebEx > WebEx Events](https://peloton.com/services-support/webex) to view available webinars and to register. Check back to this site on a regular basis, as we are constantly updating our schedule with new topics.

»» PELOTON TECHNICAL PAPERS & CASE STUDIES

Peloton has a library of technical papers and case studies available to our clients. To see available papers and to request copies, go to [Peloton.com > Resources](https://peloton.com/resources).

»» PELOTON ON SOCIAL MEDIA

Be sure to follow us on LinkedIn and Facebook for updates about exciting things happening at Peloton.

[in LinkedIn.com/company/peloton](https://www.linkedin.com/company/peloton) | [f Facebook.com/PelotonWellFocused](https://www.facebook.com/PelotonWellFocused)

HOW COMPLETIONS TEAMS ARE SAVING MORE THAN AN HOUR A DAY: AUTOMATING AER DDS SUBMISSIONS WITH PELOTON FRAC.

FROM CODE 99 TO 42, WE GOT YOU.

Peloton Frac now autogenerates your Well Drilling Completions Data submissions for Alberta Energy Regulator (AER) Digital Data Submission (DDS) upload. This saves time, enhances accuracy, and reduces mismatches with the Fracture Fluid Composition Data XML provided by your frac vendor. Clients indicate this simple tool saves over an hour on each submission. FRACing awesome!



INTERVAL DEPTHS.

In our industry, many hours are spent manually re-keying the same values into different software, spreadsheets, and data management systems. Let's dig into it, using a typical 30-stage ball drop as an example where the depths are re-entered six times:

1. After drilling, the tool company produces a liner install diagram (usually a PDF) based on proposed depths sent over from the operator. This PDF then gets sent to the pressure pumper.
2. A technical specialist takes the often PDF-only diagram and manually re-keys the 30 top and bottom TVD and TMD depths in their bid proposal software.
3. The bid proposal is passed to the data van operator. It is re-keyed into their data acquisition software.
4. Simultaneously, the on-site rep re-keys the depths into their well data management software.
5. Depths are then re-keyed again for other types of documentation (post-frac reports, chemical disclosures, etc.), delivered by the pressure pumper back to the operator's technicians, who are then responsible for regulatory reporting submissions.
6. The completions or DDS tech at the operator then manually re-keys the intervals provided in the PDF report with the Code 42 events for regulatory purposes.

Six different people, and six different places where data errors can happen—not counting the various tracking spreadsheets filled out in the field and the office. Even if the hand-key accuracy at each step is 99%, the compounding error knocks this down to 94% accuracy, or one error for every 20 hand-keyed entry.

In our example, each of the 30 intervals require 4 depths, re-keyed six times, meaning 36 potential data mismatches! This represents hours of unnecessary inefficiency in the completions process. These data integrity discrepancies can lead to submission rejection for regulatory reports, meaning the tech needs to resubmit the corrected documentation.

By utilizing a proper completions data strategy, passing data in a full cycle from completions team and back again, most of these errors and time wasters can be eliminated. From the Frac Proposal forward, with Peloton Frac, you will never hand-key again (unless its a plug and perf, where our quick and easy depth editor comes in).

ONE COMPLETIONS TEAM IS AHEAD OF THE GAME.

A Peloton client asked the team at Peloton Frac if a utility could be built to generate an XML file for intervals to load in the Alberta Energy Regulators DDS (Digital Data Submission) Portal.

This is a mandatory reporting requirement that can take operators hours per well. The Peloton Frac team was excited to collaborate with this client and build out a time-saving utility, that is now available to all our clients.

An abundance of further workflow enhancements is possible with our curated reporting APIs— powering the core of true data and efficiency in your operations.

To learn more, contact your Peloton representative or email info@peloton.com.

PELTON SHARES KNOWLEDGE WITH UNIVERSITY TRAINING COURSES & SUMMER INTERNSHIP PROGRAMS

Peloton values relationships with colleges and universities and is proud to provide Petroleum Engineering, Petroleum Technology, and related university programs and organizations with the opportunity to obtain working knowledge of the solutions we provide through our 1-day Intro to Peloton Platform: Well Data Lifecycle University Training courses and Platform Data Management Summer Internship Program.

We recognize the value of enhancing curriculum and education by leveraging relevant industry technology, which has proven to land students ahead of the curve when it comes to the competitiveness of securing and excelling in jobs amidst today's market.

For information around the university training courses or to inquire about scheduling a training at a particular university, contact Emily Condara at emily.condara@peloton.com. To learn more about and apply for a summer internship at Peloton, visit the Peloton Careers page at peloton.com.

Stay up to date on university-related news, training, job opportunities and more by following Peloton on LinkedIn today!

SAVE THE DATE!

PELTON'S 2022 USER GROUP CONFERENCE

November 7-9, 2022

Hyatt Regency Lost Pines Resort
(near Austin, Texas)

We are excited to bring back our annual client conference. Mark your calendars and stay tuned for details!



www.peloton.com
info@peloton.com

HELP DESK 1.888.PELOTON
sales@peloton.com support@peloton.com

ABERDEEN +44.1224.560.580
BRISBANE +61.44.77.66.286
HOUSTON 1.281.394.2151
MOSCOW +7.495.411.9606

AMSTERDAM +31 (0) 20.7470.106
CALGARY 1.403.263.2915
JAKARTA +62.21.570.3188
TRONDHEIM +44.1224.560.580

BEIJING +86.153.3211.7123
DENVER 1.720.826.1204
KUALA LUMPUR +60.38.920.1714