

Spring 2019

ReView

peloton
well focused®

THE INTEGRATED WELL LIFECYCLE SOLUTION

HIGHLIGHTS

- WellView to WellView Data Exchange
- Technical Papers & Case Studies
- Peloton SaaS
- ProdView Go
- Modeling a Site in SiteView
- Peloton Map
- 2019 User Group Conference Information
- Industry Conferences

WELLVIEW TO WELLVIEW DATA EXCHANGE

Oil and gas companies often jointly invest in well exploration and development. The non-operating working interest owners participate financially in the activities and want to keep track of their investment. It is common for the operator company to share a daily summary of the activities with the non-operating owners.

The amount and frequency of the data to be shared is defined in joint operating agreements and may vary by owner, well, and even by producing zone. Typically, the shared data is a high level summary of daily activities, and the information is delivered in a static report format (such as a PDF file).

CHALLENGES

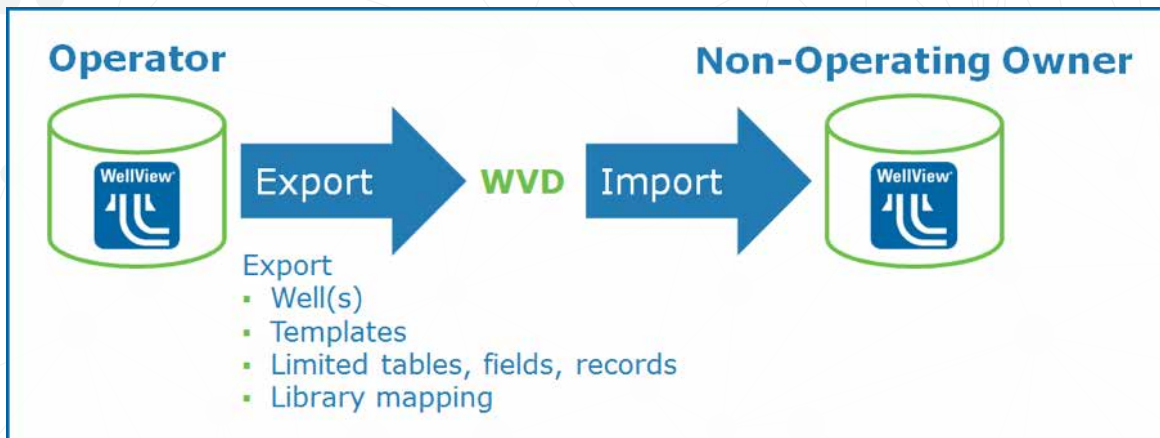
When the scope and contacts are agreed upon, operators and non-operator owners must then invest effort in transferring information to and from disparate systems. This may involve manually re-keying summary information, building custom tools to scrape details from PDF or Excel files, or outsourcing the data entry. Often they give up and simply attach a PDF file to a well record.

All of these approaches yield less than desirable results. They are expensive, time consuming, and difficult to maintain. Clients do not have timely access to the data they require to properly oversee their investments.

Continued on Page 2

WELLVIEW TO WELLVIEW DATA EXCHANGE

(CONTINUED FROM PAGE 1)



SOLUTION

Peloton has developed a way to more easily share data between companies that are both using WellView. The existing export tool was greatly enhanced to support the following:

- Templates
- Table, field, and record filtering
- Library mapping

The tool also helps administrators identify tables and fields where their configuration differs from the default, as they may choose not to export this data. This is an important concept, because when you alter the caption or unit for a field, you can change its meaning. If non-operating owners are not aware of the operator's re-purposing, they should not import this data.

CONCLUSION

The enhancements allow the operator to share the desired level of detail in a repeatable manner with their non-op owners.

The clients that are using the new functionality have realized time and cost savings. They have removed tiresome rekeying from the equation. They are also sharing a much larger scope of data. This has resulted in benefits for drilling, completions, new venture, and resource development teams.

The export enhancements are also available in SiteView, ProdView, and RigView. Clients have also expressed interest to explore data-sharing opportunities with these applications.

TECHNICAL PAPERS & CASE STUDIES

Peloton has a variety of technical papers and case studies available to our clients. Here is a list of our most recent papers. To see all available papers, visit Peloton's website.

- Well Asset Management – The Importance of Status & Classification
- Modeling a Well in WellView
- Tubing Scan Analysis
- Tracking Lessons Learned in WellView to Improve Well Design
- Well Integrity in WellView
- Consolidated Equipment Data for Asset Management in SiteView
- Modeling a Site In SiteView
- Using SiteView for Responsible Water Management

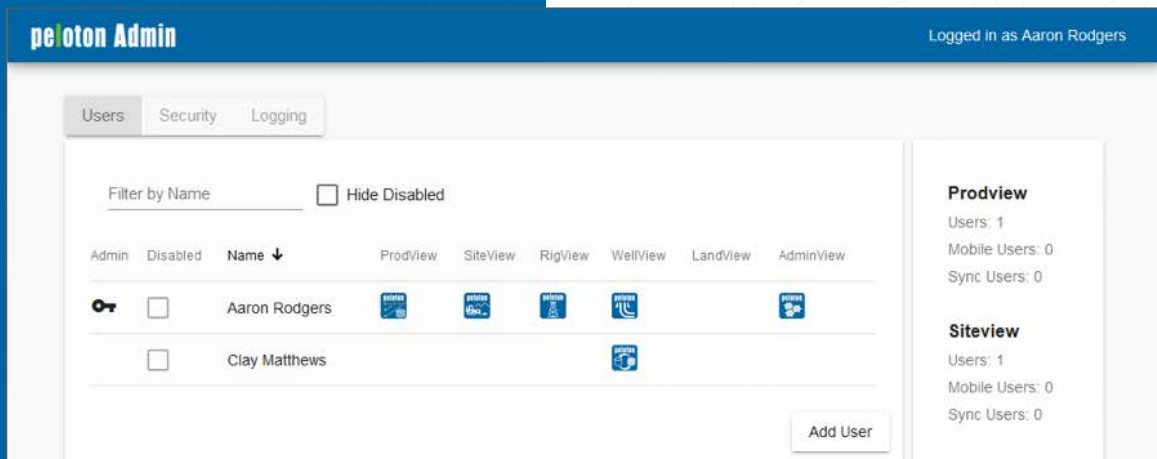
PELTON SaaS NEWS

Peloton SaaS is growing! We are expanding to multiple Azure regions, including the EU. Check out the new features: our new Admin Portal UI and Automated Report Distribution.

ADMIN PORTAL

The new Admin Portal allows Peloton clients to do the following:

- Control user access to Peloton applications: You can add users and specify their type of access, including web access, mobile access, and synchronization.
- Administer MasterView Security: In the Security tab, you can set up security settings for each Peloton application as well as configure security groups and their members.
- View logs for Peloton's services.



AUTOMATED REPORT DISTRIBUTION

The Peloton Automated Report Distribution add-in in SaaS allows you to distribute a group of WellView, SiteView, RigView, or ProdView single and multi reports to email recipients on a set schedule.


For more information on these new Peloton SaaS features, see the SaaS Guide on Premium Support.

Automated Report Distribution Settings


Grouped Report Setup

Setup a list of grouped reports, where each group defines a schedule that is used to generate the selected reports to email.

Single-Well Reports

 Create a new group of single-Well reports

Multi-Well Reports

 Create a new group of multi-Well reports

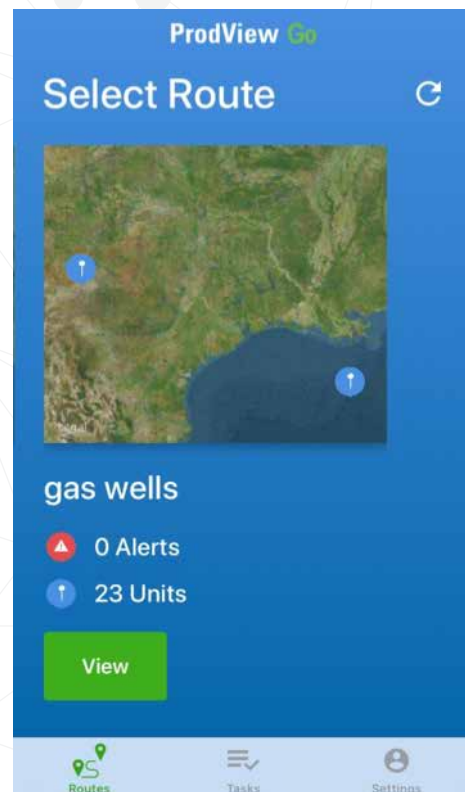
INTRODUCING PROVIEW GO

Have you tried Peloton's first mobile app yet? ProdView Go is Peloton's mobile data capture and communications platform for field operations. The app is available to ProdView SaaS users.

KEY FEATURES:

- Access to a user's routes—GPS enabled
- Quick data entry
- Task notifications, alerts, and to-do lists
- Push notifications
- Automatic data synchronization

The app works on iPhone and iPad devices with iOS version 11.2 or greater.



SIGN UP TO RECEIVE PELOTON PRODUCT NEWS!

Product News emails allow Peloton product managers to communicate with our clients on a regular basis. We use this forum to announce maintenance releases, new client case studies and technical papers available, upcoming webinars and training opportunities, plus to share tips and tricks & best practices.

Sign-up today at www.peloton.com/news-and-events/product-news-form/.

You don't want to miss out!

MODELING A SITE IN SITEVIEW

Oil and gas companies must ensure that the land they use for energy exploration, development, and ongoing operations is managed responsibly and in an environmentally sound manner. They also must meet the regulatory requirements for the use of the land, protection of the environment, and the management of water resources in the many jurisdictions where they conduct business.

From the initial application, to operations conducted during all the stages of development, to reclamation of the resource back to its original state—oil and gas companies must demonstrate that they are responsible operators. Therefore, it is very important to document their development activities.

Managing all of the operations and assets that a company is responsible for can be a daunting task due to the number of assets in the field, the different groups or departments, the number of times that assets are modified, and the number of years the lease remains active.

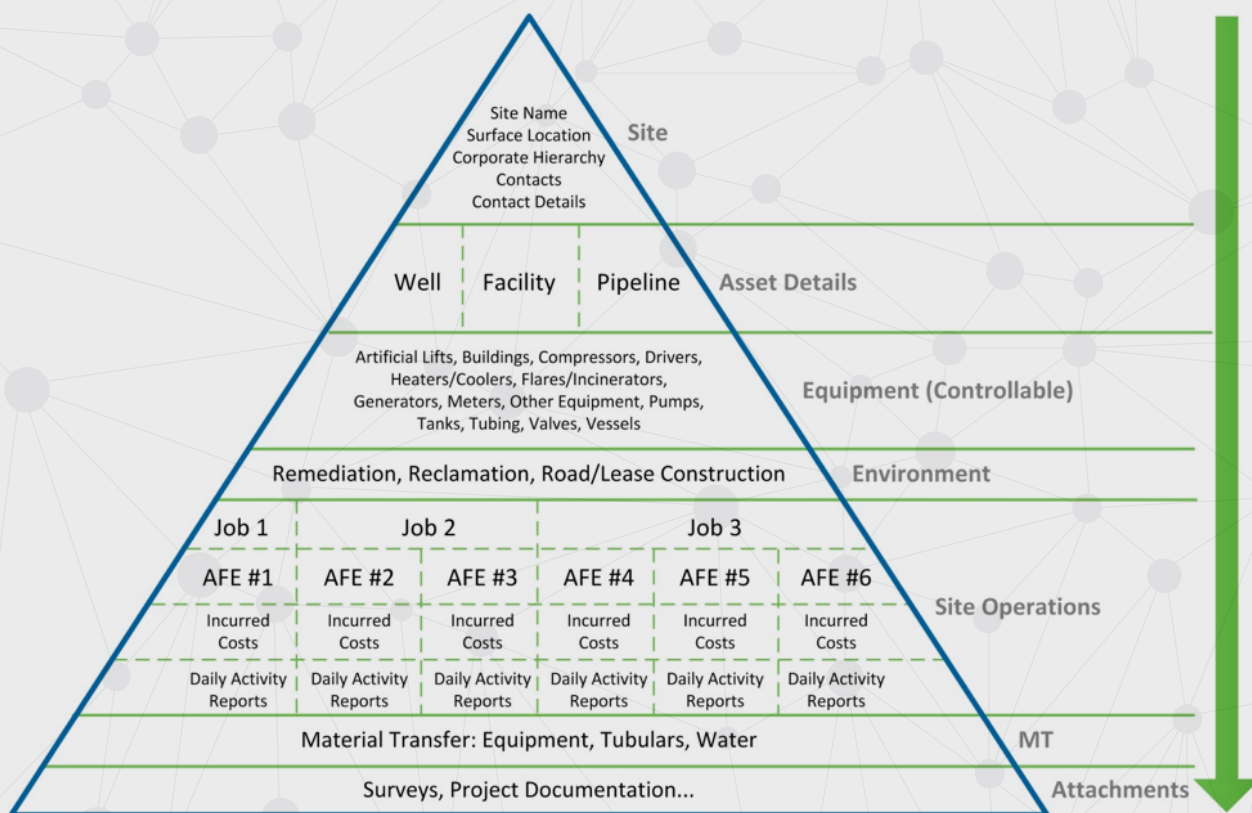
MANAGING ASSETS

To responsibly manage their assets and comply with regulators, companies must ask many questions.

SAMPLE QUESTIONS:

- How many sites is your company responsible for?
- How many wells are on each of your sites?
- How many facilities does your company have an interest in?
- What is the inspection status of sites, facilities, and equipment?
- Do you know all the pipelines you are responsible for and their status?
- Do you have the appropriate insurance?
- Are your facilities operating according to the terms of the license?

Peloton's SiteView application provides a system to solve all of these issues and more. With SiteView, you can document your requirements, create a plan, and execute that plan.

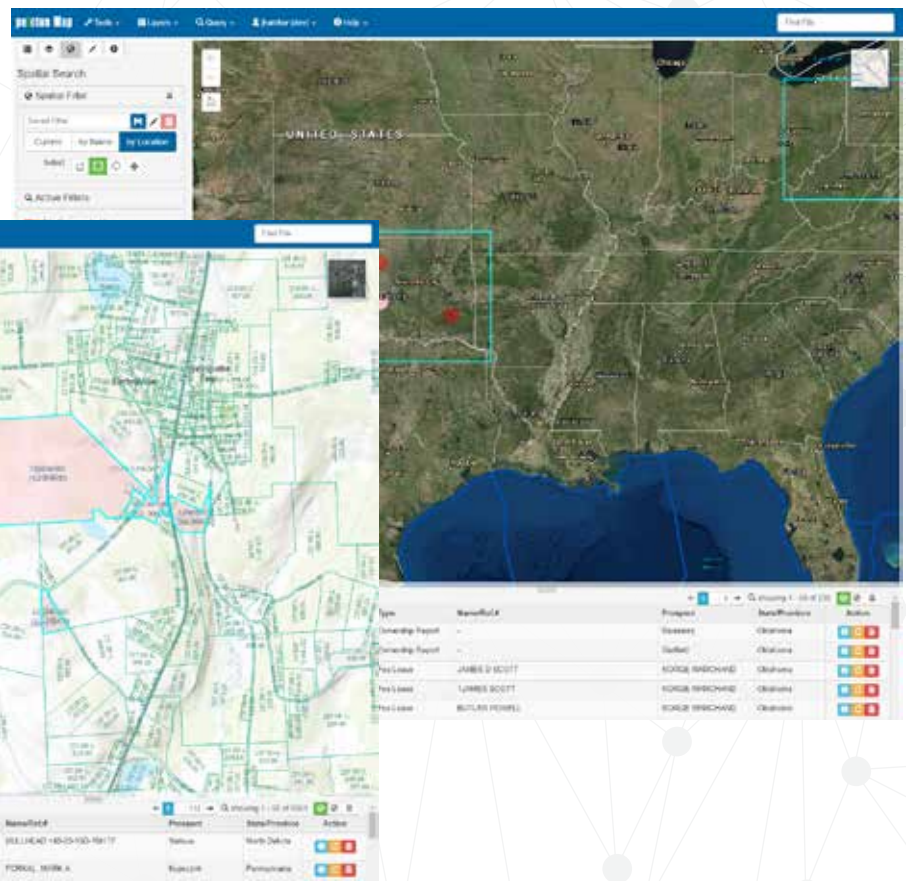
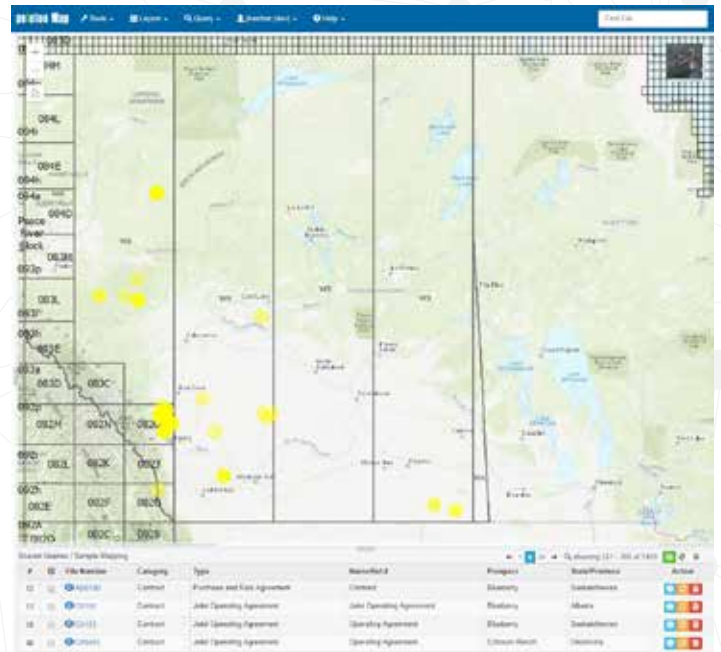


PELOTON MAP

Peloton Map is our latest web application and is a fully functional GIS application. Starting with LandView, it will completely integrate and display your operational data on a map for viewing and analysis. One of the key components of a Land software system is the ability to visualize your leases and agreements on a map. This helps validate that legal locations have been inputted properly, compare actual acreage values with values on the agreement and perform visual querying and filtering.

At Peloton we are building out the GIS capability of LandView to handle the above and more with our Peloton Map. The Map functionality will allow area polygons representing the legal locations of the agreements to be drawn automatically where possible and visualized on a map. If the polygon can't be drawn from code then drawing tools will be available to manually draw and link the area shape to the file. This will come with full querying, reporting and exporting functionality. Also, if you are using Esri's ArcGIS Online or Enterprise, you will be able to connect to your existing GIS portal and leverage all of your proprietary maps and feature layers.

As this functionality matures we will be looking to tackle more complicated analysis such as linear project routing, assessing leases from surface hole to bottom hole and tie in additional meta data from other Peloton applications.



SAVE THE DATE

For Our 2019 Client User Group Conference!

OCT 7 – 9, 2019

Our annual 2-day user group conference is scheduled for October 7 – 9, 2019, and will be held once again at the amazing JW Marriott San Antonio Hill Country Resort & Spa. Be on the lookout for our official invitation with details and registration information in late March!



VISIT PELOTON AT THE FOLLOWING INDUSTRY CONFERENCES IN 2019:

2019 IADC/SPE DRILLING CONFERENCE

March 5 – 7 // The Hague, Amsterdam

CANADIAN SCHOOL OF HYDROCARBON MEASUREMENT

March 12 – 13 // Calgary, Canada

2019 MIDDLE EAST OIL & GAS EXHIBITION AND CONFERENCE

March 19 – 21 // Manama, Bahrain

RUSSIAN DRILLING CONTRACTORS ROUNDTABLE

April 11 // Moscow, Russia

ESRI PETROLEUM GIS CONFERENCE

May 15 – 16 // Houston, Texas

2019 SPE ANNUAL TECHNICAL SYMPOSIUM & EXHIBITION

April 16-18 // Dhahran, Saudi Arabia

APPEA 2019

May 27 – 30 // Brisbane, Australia

DATA DRIVEN DRILLING & PRODUCTION CONFERENCE

June 11-12 // Houston, Texas

43RD INDONESIA PETROLEUM ASSOCIATION CONFERENCE

September 4 – 6 // Jakarta, Indonesia

KAZAKHSTAN DRILLING CONTRACTORS ROUNDTABLE

September 12 // Astana, Kazakhstan

IAPG ARGENTINA OIL & GAS EXPO

September 23-26 // Buenos Aires, Argentina

SPE ANNUAL TECHNICAL CONFERENCE & EXHIBITION

September 30 – October 2 // Calgary, Canada

NEFTEGASSERVICE 2019

October 30 // Moscow, Russia

peloton
well focused®

www.peloton.com
info@peloton.com

HELP DESK 1.888.PELOTON
sales@peloton.com

support@peloton.com

ABERDEEN +44.1224.560.580
BRISBANE +61.73378.9556
DUBAI +971 (0) 4433.5430
KUALA LUMPUR +60.12.387.2647

AMSTERDAM +31.20.7470.106
CALGARY 1.403.263.2915
HOUSTON 1.281.394.2151
MOSCOW +7.495.411.9606

BEIJING +86.153.3211.7123
DENVER 1.720.543.0374
JAKARTA +62.21.570.3188

© Peloton Computer Enterprises Ltd. All rights reserved. WellView, SiteView, RigView, ProdView, LandView and MasterView are registered trademarks of Peloton Computer Enterprises Ltd. All other trademarks and registered trademarks are owned by their respective companies.

**FOLLOW PELOTON WELL FOCUSED ON
LINKEDIN AND FACEBOOK!**

