

Spring/Summer 2020

ReView

peloton
well focused®

PELTON PLATFORM SOLUTIONS: WELL DATA MANAGEMENT PRODUCTION DATA MANAGEMENT LAND DATA MANAGEMENT

HIGHLIGHTS

- WellView Allez
- Peloton Go
- Peloton Water
- Data Loading
- ProdView Flow Network Diagram
- WellView LandView Integration
- Marketing Resources Available
- Peloton Acquires ExproSoft
- Peloton Platform News

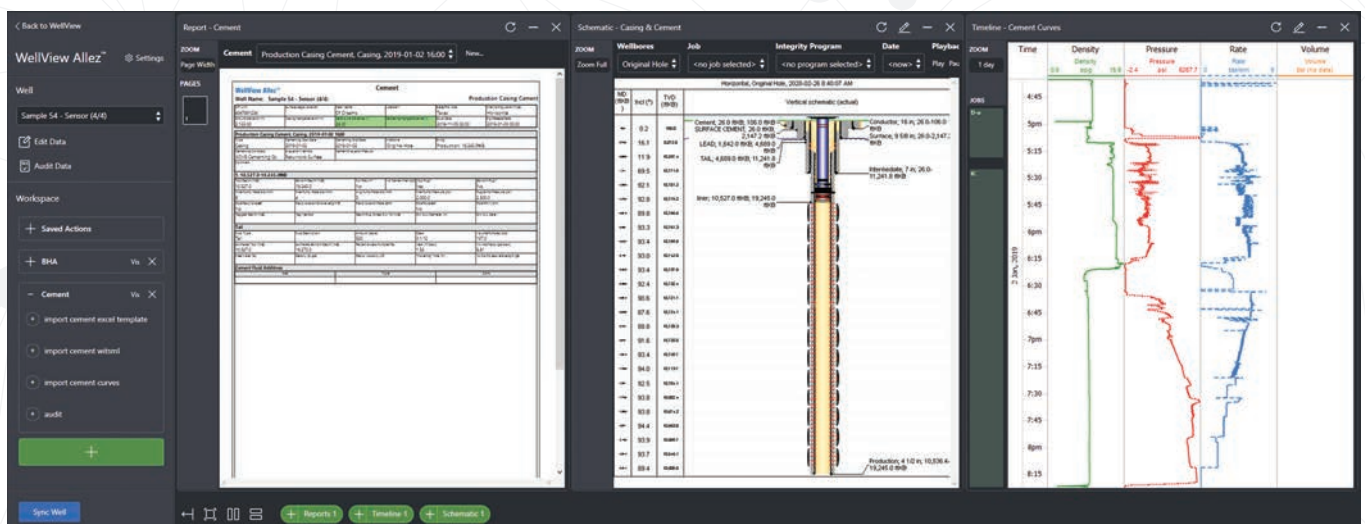
WELLVIEW ALLEZ™

The world has changed and WellView is changing with it! WellView Allez is the evolution of WellView. It provides a completely new experience and refreshed interface, yet it is familiar enough that companies won't need to re-train their user community.

When WellView was first developed, Peloton embraced a Windows experience with folders, tabs, grids, and

right-click menus. The Windows look was familiar to our clients and helped new users get quickly started in the application.

With WellView Allez, multiple reports, schematics, and timelines (or any combination) appear side by side. Think of it as your single well dashboard.

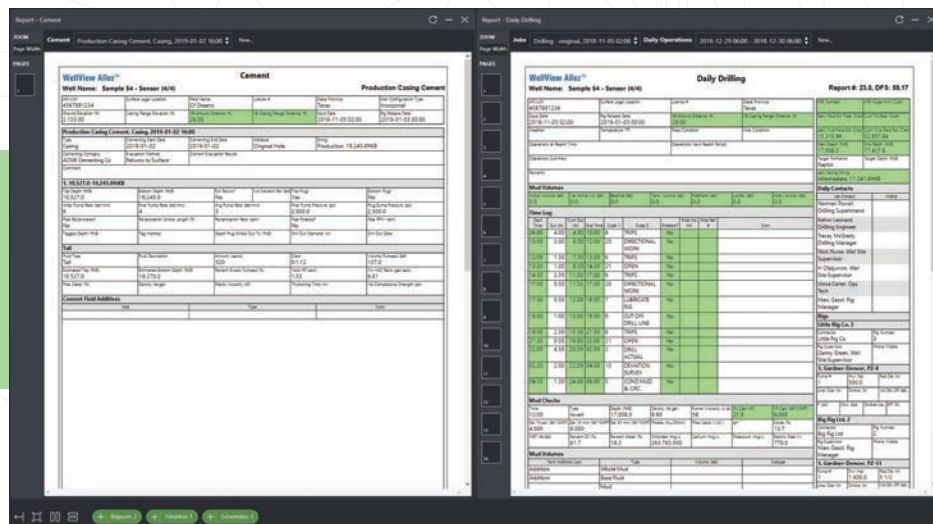


Continued on Page 2

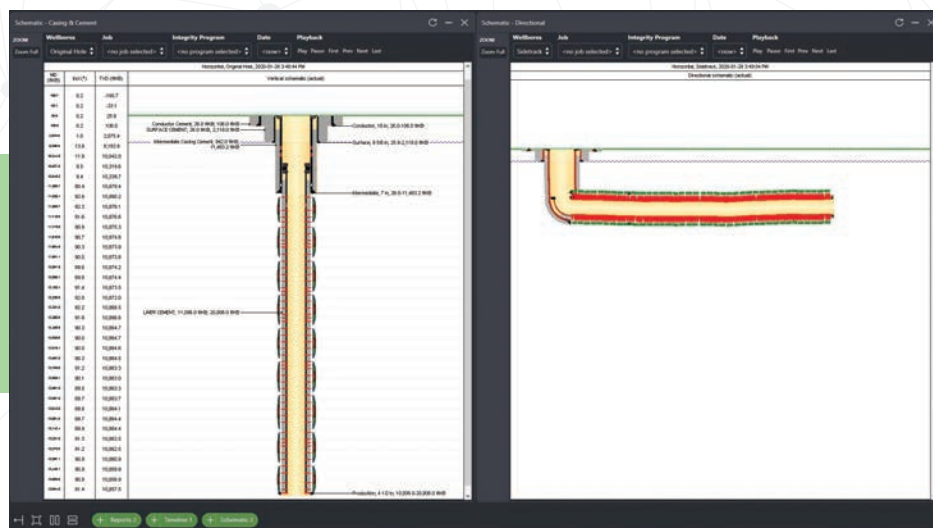
WELLVIEW ALLEZ

(CONTINUED FROM PAGE 1)

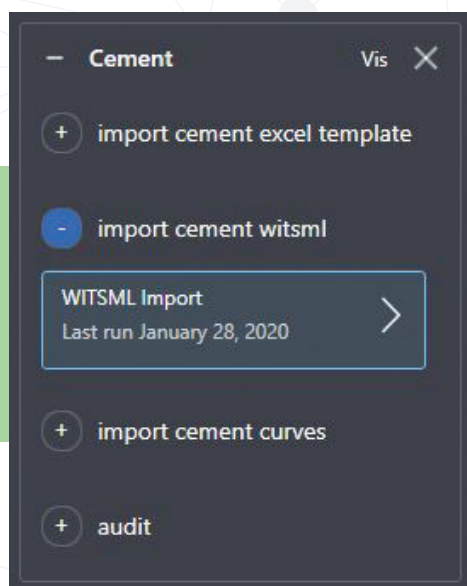
Based on your screen size, you can open as many templates as you like. No more jumping tab to tab or folder to folder. Imagine a Cement and Daily Drilling report side by side.



Perhaps you would like to see a vertical and directional schematic template with different wellbores open at the same time.



Configurable workflows guide users through import, data entry, and data QC (audit). The user is informed of the functionality and stepped through the process. The relevant import tool or audit appears directly from Allez.



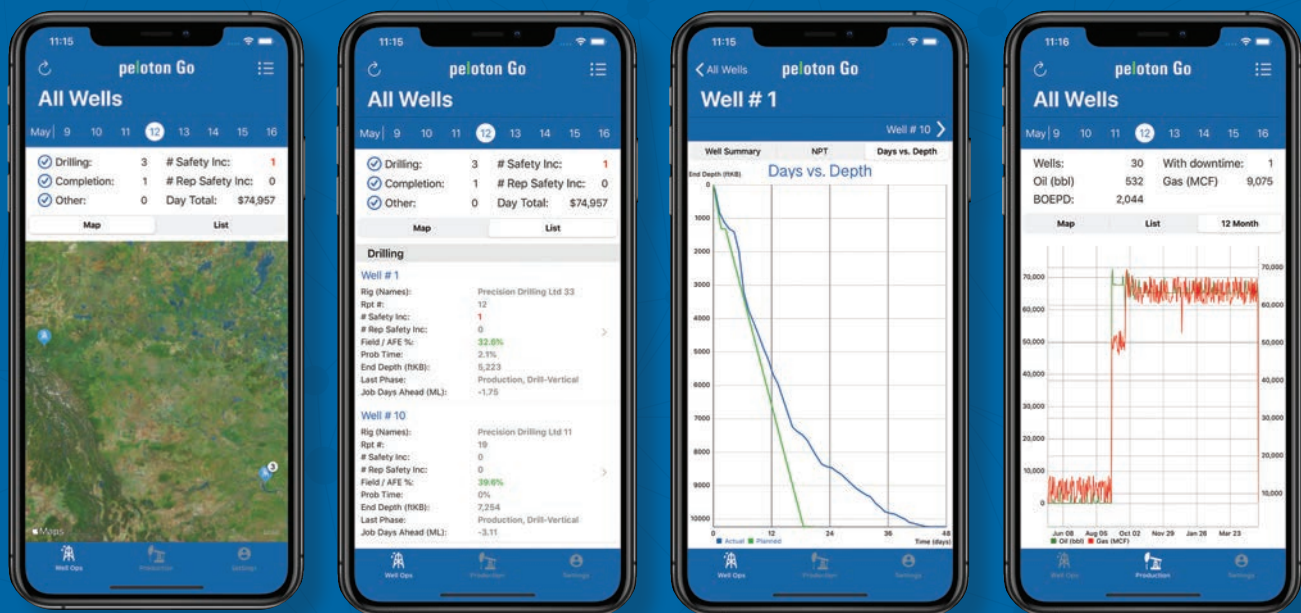
The workflow also opens pertinent report, schematic, and timeline templates so the user can immediately visualize the results.

In addition to WellView Allez, we are also re-imagining the Well Explorer and Edit Data interface. Stay tuned for Allez release details and exciting new developments in 2020!

INTRODUCING PELOTON GO!

The world relies on mobility, and so do our clients. Imagine being able to review and monitor your daily job responsibilities on-the-go, anytime and from anywhere, allowing you to work more efficiently and smarter?

The Peloton Go mobile app is a new iOS reporting tool designed for the oil and gas industry and was created with our clients in mind. With this new mobile app, you'll be able to review and provide a daily management summary of WellView and ProdView data - directly from your iPhone!



ALL IN THE PALM OF YOUR HAND:

- Instantly access your wells in list format or on a map.
- View today's KPIs (safety, cost, daily summary) or select a date to see historical data.
- Monitor oil, gas, and water production.
- Daily drilling, completions and well servicing report (pdf) on demand is coming soon!

The Peloton Go app is available in the Apple Appstore. Companies can manage user access and security in the Peloton Admin Portal.

Contact Peloton for a demo today!

PELOTON WATER MAKES A SPLASH

Water is becoming one of the most costly operating expenses for oil and gas companies. Whether it's determining water use for drilling and fracking activities or meeting stricter environmental regulations on produced water, planning water requirements and tracking usage have become crucial for all well and site operations.

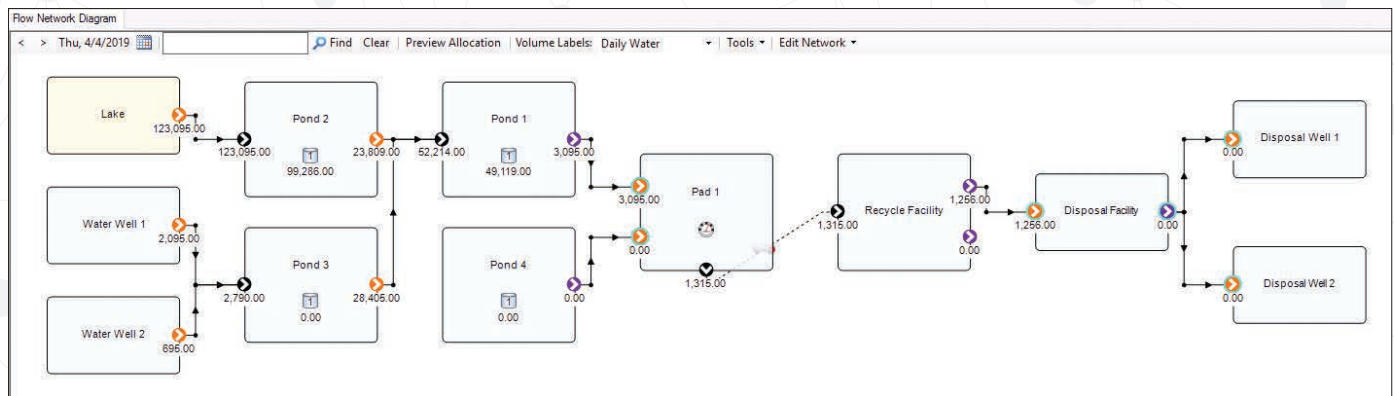
Thus enters Peloton Water! This new application efficiently tracks the volumes and movement of the water from sourcing to operating sites then onto recycling or disposal of the water. Planned and actual water data is easily captured and visualized in a flow network.

WITH PELOTON WATER, YOU CAN:

- Set up an accurate plan of water needs
- Easily capture water readings using a laptop, tablet, or smartphone
- Enter data in a spreadsheet-style run sheet that is based on routes
- Make use of integrated data audits and quality control
- Analyze actual historical water use to reduce expenses and increase cash flow

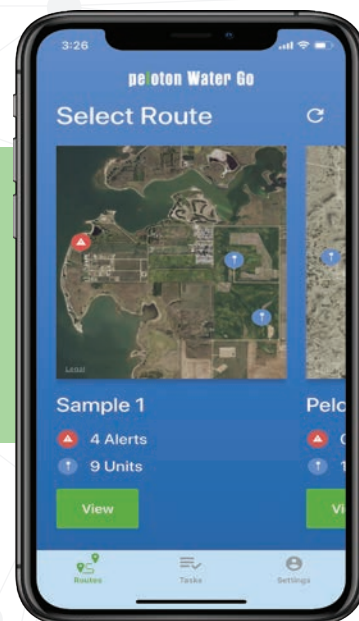
The Water application runs on Peloton's SaaS (Software as a Service) cloud solution.

WATER FLOW NETWORK DIAGRAM, CREATED FROM DATA:



SMARTPHONE DATA CAPTURE:

Peloton Water is the one source of truth for water data management, giving you the ability to capture all of your water data, perform historical analysis on actual usage, and remain compliant with regulatory standards. Reduce your costly water expenses with Peloton Water!



STOP TYPING! START IMPORTING!

Do you want to save time, improve data quality and completeness, and reduce frustration? You have better things to do, than spend hours needlessly typing digital data into the application.

Most of the data that you are inputting in WellView exists in a digital format that can readily be imported. Importing data direct from source can dramatically reduce the amount of time spent re-keying data into the application. Shift your role from data entry to one of data review & QC.

Contact your Peloton rep to discuss today!

PELTON FORMATS

- **Vendor Data Loaders:** Bit & BHA, Cement, Cement Curves, Completions Flowback, Plug Drill Out, GLV, ESP
- **WV to WV Data Exchange:** Op/Non-Op
- **WV 10.4 Custom Excel Loader:** Formations, Surveys, Perfs, Swabs

PUBLIC/ POPULAR FORMATS

- **Pason WellView DataLink**
- **WITSML Server**
- **Tour Sheets:** Pason IADC, CAODC
- **LAS:** Depth and Time Logs
- **WITSML Static:** Mud, Frac, Mud Loader

THIRD PARTIES



PROVIEW FLOW NETWORK DIAGRAM UPDATES

The November 2019 maintenance release of ProdView 3.2 delivers some exciting new features. In particular, the flow network diagram includes new methods to create and duplicate units and completions, to move units on the diagram, and to change connections between nodes.

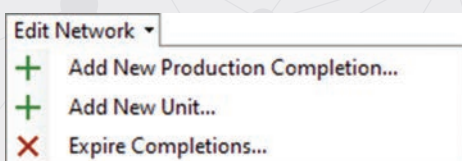
NETWORK EDITOR

The flow network diagram provides several new tools that give you a quick way to do the following:

- Add new completions
- Add new units
- Duplicate units
- Duplicate completions
- Expire completions

When adding new completions or units, a wizard steps you through the main data entry points.

To access the network tools, go to the **Edit Network** menu.

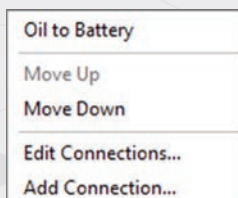


The wizard steps you through the different areas to set up in your completion.

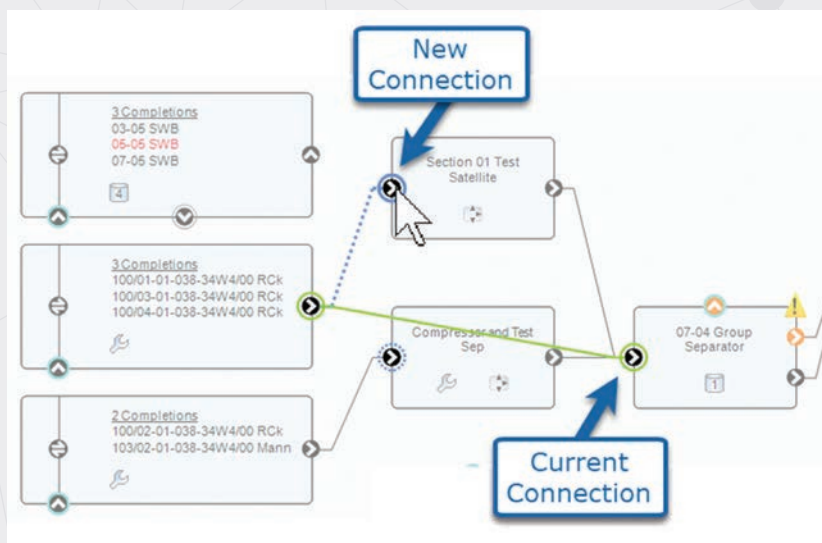
ADD NEW PRODUCTION COMPLETION:

CHANGING CONNECTIONS

New menu options in the diagram allow you to more easily change the node connections. The effective date for the new connections is the current date shown on the diagram.

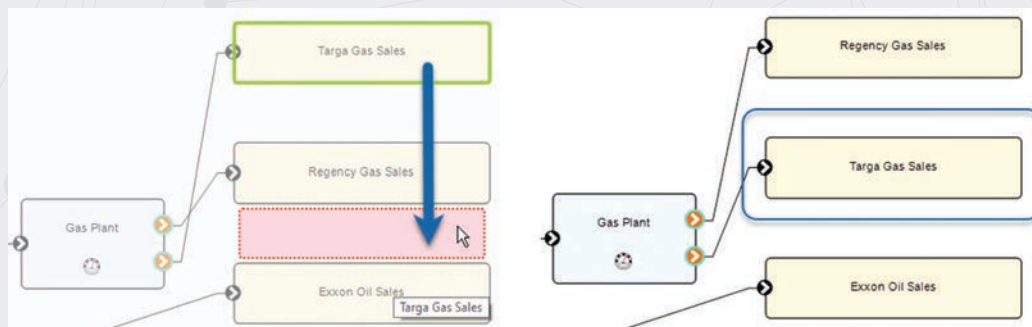


To add or edit connections, right-click a node that is connected to another node and choose **Edit Connections** or **Add Connections**. Available connections are shown with a blue circle: Click a blue circle node to establish a new connection.



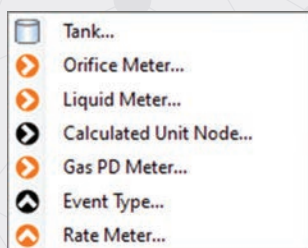
MOVING A UNIT

Instead of using menu commands to move units up, down, left, and right, you can use the **Move Unit** command to more easily move to a new position. A red box allows you to see where you are placing the unit.



ADDING NEW EQUIPMENT

Instead of using the Edit Data window to add new items to the diagram, such as tanks and meters, you can now add the following items directly from the diagram.



To add new items, right-click a unit and choose Add New, then the type of item. You can then enter the data for the new item.

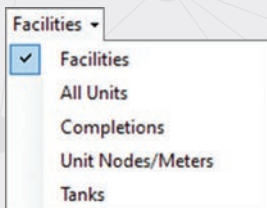
PROVIEW PRODUCTION MONITOR UPDATES

In past versions of the Production Monitor, we could graph data at the completion level only, allowing users to trend a well. They could compare wells, fields, and areas, but the results always showed a sum or average of the completion totals.

In the latest ProdView release, we have added the ability to analyze facilities, units, meters/nodes, and tanks.

Your analysis can now include the following information.

- **Facilities:** For example, to see battery production over time.
- **All Units:** For example, to track what has been delivered.
- **Unit Nodes/Meters:** For example, to compare a sales meter to a check meter to look for drift or discrepancies.
- **Tanks:** For example, to identify how efficiently you have maintained or cleared inventory over time.



For more information on the updates in the recent ProdView maintenance release, see the release notes in the *AppFrame 4.2 Administrator Guide* on Peloton Premium Support.

FACILITY PRODUCTION:

The example shows battery production over time.



THE LIFECYCLE OF AN INTEGRATED WELL AND LAND SYSTEM

Well status and classification are concepts that extend beyond WellView and are integral to decision making. Not only Drilling and Completions require the status of the well to effectively perform their functions. Even though users in other departments do not use WellView, they may require accurate well data.

The Land department using LandView requires the well status to successfully manage their leases and to ensure that the developed, undeveloped, producing, and non-producing acreage is calculated correctly. Critical dates (including Spud, Finished Drilling, Rig Release, On Production, and Suspension) are required.

In some cases, mineral leases have conditions such as lease held by production. These well notifications are critical in the Land Department's proactive management of their mineral leases.

Surface Land also depends on a well's status to manage the surface lease obligations. Surface Land payments are subject to critical dates, such as when the lease is constructed right up to when the well is abandoned and the site reclaimed.

The Joint Interest module is concerned about wells reaching key milestones. Wells that contribute to the unit need to be included in the unit agreements.

SAMPLE PROGRESSION OF ZONE STATUSES IN THE WELL LIFECYCLE:



TYPICAL WELL LIFECYCLE AS RELATING TO LAND

For an oil and gas company, the following stages of a well relate to a land administrative branch of the company.

- **Proposal:** A proposed well in WellView can be visible in LandView to provide information for joint operating agreements, related lease tracts, and division orders. The well can also be shown on LandView's map to see lease and unit boundaries.
- **Production:** Populating the producing status in WellView ensures the most accurate acreage reporting in LandView.
- **Cessation of Production:** If the well is shut in, passing that information to LandView ensures that the land team has the time it needs to plan a course of action and ensure that they do not lose any leases.
- **Plugging and Abandonment:** When the well has reached the end of its lifecycle and is abandoned, the land team is notified so they can decide what to do with the affected leases.

WELL RECORD IN LANDVIEW SHOWING CURRENT STATUS OF ABANDONED GAS FROM WELLVIEW:

peloton LandView [Go](#) [Tools](#) [Query Files](#) [Payments](#) [Laure \(sandbox\)](#) [Help](#)

[Back](#) [Comments \(0\)](#)

52

Well - 52

API/UWI: 52 Name: Sample 52 - Drilling Curve Analysis

This well is managed by WellView®.

Created Dec 4, 2019 at 3:01 PM Mountain Standard Time, last updated 2 months ago by afarris [More...](#)

LandView® Well Data

Internal Status: Spacing Unit Area: ac

AFE: Penalty Well: ☐ Yes ☒ No

Cost Center:

WellView® Well Header

Sample 52 - Drilling Curve Analysis

Legal Well Name:	Sample 52 - Drilling Curve Analysis	API/UWI:	52	Extra Well ID B:	-
Extra Well ID C:	-	Extra Well ID D:	-	Extra Well ID E:	-
Lease:	-	Pad Name:	-	Operator:	-
License #:	-	License:	-	Basin:	-
Field Code:	-	Well Type:	Development	Well Subtype:	-
Fluid Type:	Gas	Well Configuration Type:	Horizontal	Number of Wellbores:	1
Well Status:	Abandoned Gas	Well Sub-Status:	-	Current Well Status:	-
Current Well Sub-Status:	-	Current Status Date:	-	Sour Class:	Sweet
Original KB Elevation:	4,219.16ft	Ground Elevation:	4,202.76ft	Total Depth:	17,936.4 ftKB
Total Depth (All):	Original Hole - 17,936.4 ftKB	Total Depth All (TVD):	Original Hole - 10,239.7 ftKB	Well License Date:	Mar 23, 2017 12:00 AM
Spud Date:	May 4, 2017 5:45 AM	Rig Release Date:	Jun 3, 2017 11:59 PM	On Production Date:	-
Abandon Date:	-	Legal Survey Type:	wvloodis	Surface Legal Location:	-
Area:	-	County:	-	State/Province:	North Dakota
Country:	USA	District:	-	Division:	-
Lat/Long Data Source:	-	Lat/Long Datum:	-	Latitude:	48.9°
Longitude:	-98.525°	Platform:	-	Operated?:	Yes
Local Time Zone:	0hr	Comment:	-		

Integrating LandView and WellView is more than simply passing data from one system to another. The connection allows your land team to access everything in one location—well status, location, and depth—to give up-to-date acreage reporting. All departments are then making decisions on the same information.

For more details on this topic, make sure to request the white paper through our website.

CHECK OUT OUR RESOURCES TO STAY INFORMED AND ENHANCE YOUR PELOTON EXPERIENCE

PELOTON PRODUCT NEWS EMAILS

Product News emails allow Peloton product managers to communicate with our clients and peers on a regular basis. We use this forum to announce maintenance releases, new client case studies and technical papers available, upcoming webinars and training opportunities, plus to share tips and tricks and best practices. Simply sign up by going to [peloton.com](https://www.peloton.com) > **News & Events > Sign Up for Product News.**

PELOTON PRODUCT WEBINARS

Peloton hosts educational product webinars on a regular basis. Go to [peloton.com](https://www.peloton.com) > **Services & Support > WebEx > WebEx Events** to view available webinars and to register. Check back to this site on a regular basis, as we are constantly updating our schedule with new topics.

PELOTON TECHNICAL PAPERS & CASE STUDIES

Peloton has a library of technical papers and case studies available to our clients. To see available papers and to request copies, go to [peloton.com](https://www.peloton.com) > **Resources.**

PELOTON NEWSLETTERS

To join our mailing list to receive Peloton newsletters that include new product enhancements, technical tips, upcoming conferences and more, go to [peloton.com](https://www.peloton.com) and complete the form at the bottom of the web page.

PELOTON VIDEOS

Peloton has various how-to videos and recorded webinars available on our Premium Support site. We are constantly adding new videos, so be sure to check the site often. To access these videos, log into your **Peloton Premium Support account** and **click the Videos tab.**

PELOTON ON SOCIAL MEDIA

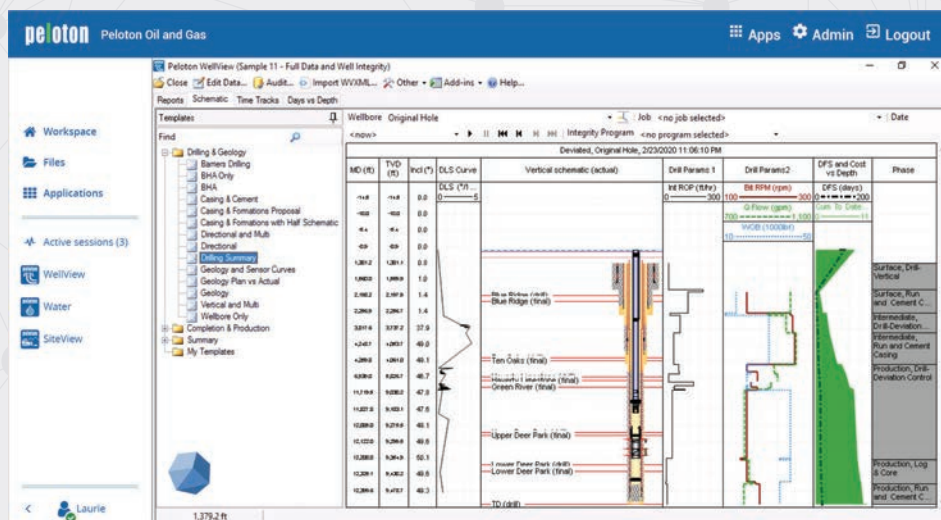
Be sure to follow us on LinkedIn and Facebook for updates about exciting things happening at Peloton.

 [LinkedIn.com/company/peloton](https://www.linkedin.com/company/peloton) //  [Facebook.com/PelotonWellFocused](https://www.facebook.com/PelotonWellFocused)

PELOTON PLATFORM NEWS

The Peloton Platform provides a single workspace for all Peloton applications, now including LandView and Peloton Map. Users can seamlessly access their work from a secure, web-based location. If no internet access is available, you can install the applications locally and synchronize the data later.

Peloton provides the infrastructure, so you do not need to cover costs for hardware, software, updates, backups, and data center operations.



USER ADMINISTRATION

The Peloton Platform allows for easier administration of user accounts.

- When adding new users, you need only add the first name, last name, and email address. The email address is now used as the username.
- Single-sign on users are granted application access through Peloton's Platform before they sign in.
- The Sync tab allows you to view and add new Sync users for standalone installs.

The screenshot shows the Peloton User Administration interface. At the top is a navigation bar with 'Users', 'Sync Accounts', 'Security', 'Downloads', and 'Logs'. Below this is a table with columns: 'Username ↑', 'ProdView Sync', 'SiteView Sync', 'Wellview Sync', and 'Delete Sync User'. The table lists three users: 'brian.white', 'john.brown', and 'jane.green'. Each user has checkboxes for 'ProdView Sync', 'SiteView Sync', and 'Wellview Sync'. The 'Delete Sync User' column contains a trash icon for each user. At the bottom left of the table is an 'Add User' button. The bottom right corner of the interface shows the page number '2 of 1'.

Username ↑	ProdView Sync	SiteView Sync	Wellview Sync	Delete Sync User
brian.white	<input checked="" type="checkbox"/>	<input checked="" type="checkbox"/>	<input checked="" type="checkbox"/>	
john.brown	<input checked="" type="checkbox"/>	<input type="checkbox"/>	<input type="checkbox"/>	
jane.green	<input type="checkbox"/>	<input type="checkbox"/>	<input checked="" type="checkbox"/>	

AUTOMATED REPORT DISTRIBUTION

The Peloton Automated Report Distribution add-in allows you to automatically deliver selected reports to email recipients on a set schedule.

New features:

- Select a profile
- Send a test message
- Display profile background colors and global tables such as attachments and comments on reports



PELTON ACQUIRES EXPROSOFT

Peloton is pleased to announce the acquisition of ExproSoft, a leading supplier of well integrity, reliability and data modelling software and consulting services based in Trondheim, Norway.

As our industry embraces digitalization and cloud technology, the opportunity to align ExproSoft's software and services with Peloton's Platform solutions, including well data lifecycle and production data lifecycle, will enhance our clients' ability to analyze their operational data, improve decision making and optimize opportunities.

We are looking forward to further developing ExproSoft, including integrating our combined technology to increase productivity and reduce cost for our clients. Stay tuned for updates from Peloton!

Peloton Platform Solutions

Well Data Lifecycle

Wells, Equipment, Operations, Resource Scheduling



Production Data Lifecycle

Field Operations, Allocations, Regulatory, Well Surveillance



Land Data Management

Agreements, Ownership Obligations, Royalties



peloton
well focused®

www.peloton.com
info@peloton.com

HELP DESK 1.888.PELOTON
sales@peloton.com

support@peloton.com

ABERDEEN +44.1224.560.580
BRISBANE +61.44.77.66.286
DUBAI +971 (0) 4433.5430
KUALA LUMPUR +60.38.920.1714

AMSTERDAM +31.20.7470.106
CALGARY 1.403.263.2915
HOUSTON 1.281.394.2151
MOSCOW +7.495.411.9606

BEIJING +86.153.3211.7123
DENVER 1.720.826.1204
JAKARTA +62.21.570.3188
TRONDHEIM +47 73 20 04 00

