

## Peloton Announces LandView, the Newest Addition to our Integrated Well Lifecycle!

Our latest solution to help solve the land management data problem with the most current technology is now commercially available. LandView is a complete land management system that tracks every file type throughout the land process. It is a hosted, web-based cloud solution so you can access your land data from anywhere. Track obligations, payments, royalties, acreage and division of interest. Visualize this data in the title chain and reporting tools.

### KEY FEATURES INCLUDE:

- Ability to handle multiple jurisdictions, specifically Canada and United States in one system
- Easy to use interface
- Integrated contract, mineral and surface file system
- Drawn from data Title Chain Visualizer
- Obligations e-calendar with alerts
- Payment approval and management system
- Project management for file review
- Integration with the other Peloton applications
- Ad hoc query engine with dynamic or out of the box reporting
- Track units, pooling and joint venture agreements
- Business rule-driven data auditor for enhanced data quality

The screenshot displays the LandView web application interface. The top navigation bar includes 'LandView', 'Go', 'Tools', 'Query Files', 'Laure (sandbox)', and 'Help'. A search bar on the right says 'Find file, project, BA, etc.' and the Peloton logo is in the top right corner. The main content area shows a record for 'Mineral - M0100'. It includes a sidebar with navigation links like 'Base Data', 'Base Area', 'Obligations & Payments', 'Provisions', 'Amendments', 'Acquisition', 'Communications', and 'Attached Documents'. The main record details include: 'Provincial Crown (0176100045)', 'Dated January 13, 1977', 'Originally between Peloton Oil and Gas, Aperture Science Energy Ltd. and Alberta Department of Energy', 'Payor: ABC Resources Ltd.', 'Blueberry Prospect', and 'Created 2 Apr, 2015 at 2:48 PM Last Updated: 7 days ago by Gary More...'. Below this is a 'Base Data' section with fields for 'Internal Company' (Aperture Science Energy Ltd.), 'Lessor Reference' (0176100045), 'Alt. File Number' (1236), 'File Status' (Active), 'File Type' (Provincial Crown), 'Sub Type' (Lease), 'Lease Date' (13 Jan, 1977), 'Effective Date' (28 Oct, 1976), 'Term' (10 Years), 'Expiry Date' (27 Oct, 1986), 'State/Province' (Alberta), 'Division' (Coke Lands), 'Gross Area' (6,400,000 ac), 'Net Area' (2,500,000 ac), and 'Mineral Substance' (PNG). At the bottom is a 'Base Area' table showing acreage breakdowns.

	Total Acres	Active Acres	Developed Acres	Undeveloped Acres	Producing Acres	Non-Producing Acres	Proven Acres	Non-Proven Acres
✓ Gross	6,400,000	6,400,000	5,760,000	640,000	5,760,000	640,000	0,000	6,400,000
✗ Net	5,440,000	5,440,000	4,800,000	640,000	4,800,000	640,000	0,000	5,440,000
Company Net	1,928,840	1,928,840	1,920,000	8,840	1,920,000	8,840	0,000	1,928,840
Reported	0,000							
Overlapping	6,400,000							

### ADVANTAGES

Advantages for LandView users:

#### Integrated File System

Easily cross-reference all possible related files; for example, relate your contracts with your mineral leases. Link your related wells and facilities to any split or tract.

(article continued on page 2)

## HIGHLIGHTS INSIDE WINTER 2017 REVIEW:

- Page 2 Peloton Announces LandView (continued)
- Page 3 New Auditor Features
- Page 4 Free Peloton Webinars
- Page 4 Peloton Technical Papers & Case Studies
- Page 4 Peloton 2017 Conferences

# Peloton Announces LandView, the Newest Addition to our Integrated Well Lifecycle! *(continued from page 1)*

## Easy Navigation and Data Entry

All file information is displayed in one continuous scrolling page. Quickly hyperlink to a section from the sidebar. Data entry is facilitated with user friendly forms showing only the fields required.

## Title Chain Visualizer

Finally a way to see how your interest changes over time. From US broker-driven ownership reports to complex Canadian contracts, you can see your current interest position, historical interest and all events in between.

## Context-Driven Navigation Screen

Easily see upcoming obligations, recently opened files and projects where you have files signed out. Use a quick query bar for searches.

## Comprehensive Query Engine

Dynamically build queries by layering filter criteria. Save these queries to be run again, or copy the results out to Excel for additional analysis. Choose your display columns for instant output, or select one of the predefined out-of-the-box reports to print.

## Acreage Reporting

Easily flag acreage within tracts or splits for accurate acreage reporting—no more double counting acreage for management reports.

## Mass Updates

Update data, such as assignment of interest, across files or Business Associates using the mass update utility. View these changes dynamically in the Title Chain Visualizer.

## Integrate with WellView

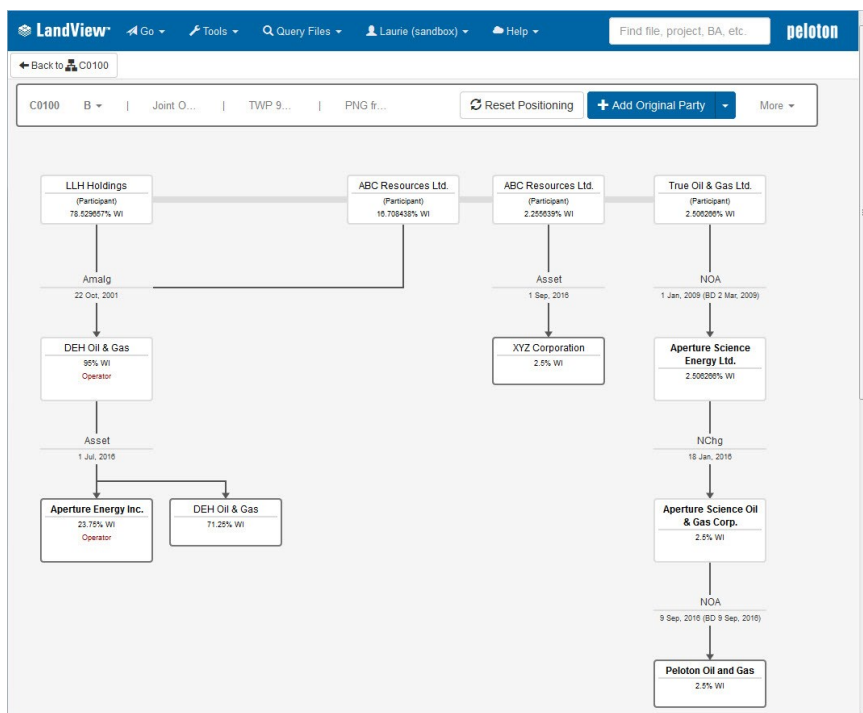
Import your well list directly from WellView and keep data up to date as it changes in WellView. Also, if you require more information on the well, launch WellView directly from LandView.

## Project Management

Assign files to a project for analysis, whether it be for a data quality review, title chain analysis, preparation for divestiture or rental review. Track the status of the project and of each file within the project to determine percent complete to date and expected completion date, to name a few metrics.

## Programmable API for Integration

Use our available API to integrate to any third party system such as your accounting or AFE system.



# New Auditor Features

The newest versions of Peloton applications (WellView 10.2, SiteView 5.1, RigView 4.1, and ProdView 3.0/3.1) include major enhancements to the data auditor. The Peloton General Audit is a new tool that enables you to build your own audit rules, and allows you to analyze audit errors using an Excel template.

## Peloton General Audit

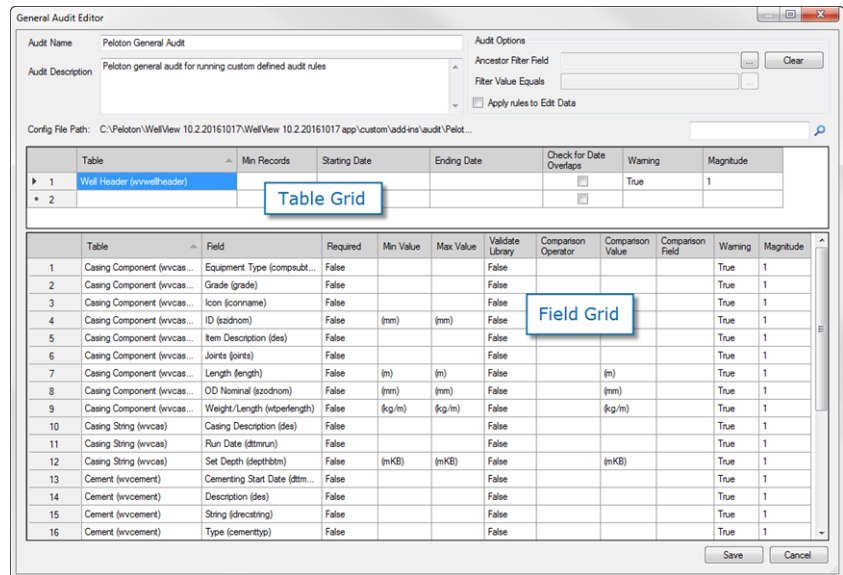
The Peloton General Audit replaces the Peloton Simple Audit that was available in previous versions of Peloton applications. The new tool provides a user interface to build audit rules. It also includes a new concept of table level rules to define a minimum record count and to verify dates.

The Peloton General Audit is comprised of two files:

- **peloton.addin.generalaudit.dll**  
(the audit add-in DLL file)
- **peloton.addin.generalaudit.afaud**  
(the corresponding configuration file)

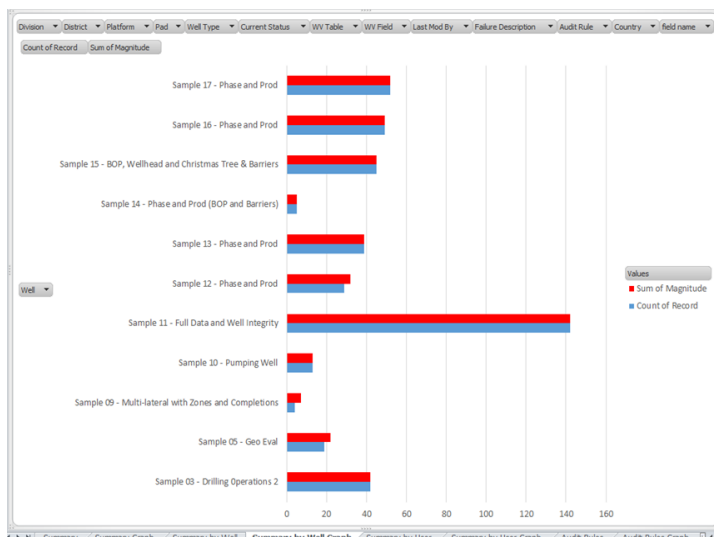
To open the tool, right-click the Peloton General Audit in the list of audits.

The window has several key areas:



- **Audit Options:** Set general audit options, including filtering by an ancestor record.
- **Table Rules:** Set the minimum number of records, verify starting and ending dates and overlaps, and set warning and magnitude levels.
- **Field Rules:** Indicate whether fields are required, set minimum and maximum values, validate against library entries, assign comparison operators and values, and set warning and magnitude levels.

You can create as many sets of audit rules as you need by copying and pasting the DLL file. You can also upgrade existing simple audits.



## Audit Analysis

To pass the audit results to an Excel template, right-click the audit result pane, and choose the Send to Excel option. You can analyze the errors (count and magnitude) by different criteria, including audit rule, table, well, or user.

For further details on using the Auditor, refer to the *AppFrame 4.2 Administrator Guide*.



## Free Peloton Webinars—Register Today!

Peloton is hosting free webinars to our clients in 2017, and you won't want to miss out! Webinars are listed on our website under 'News and Events', so please check out the schedule on a regular basis, as we are continuously adding additional topics. Some of the topics currently offered include:

- Intro to WellView for End Users
- WellView Production Failure Analysis
- WellView Report Configuration
- WellView 10.2 Data Auditor
- WellView Schematic Configuration & Well Barriers
- WellView WITSML Static Imports
- WellView for Geologists
- Peloton's Water Tracking Solution
- Intro to SiteView—Facilities
- Intro to SiteView—Construction
- Intro to SiteView—Environmental
- SiteView's New Business Rule Audit Tool
- Mapping Functionality within Peloton Applications
- Exploring WellView & SiteView Data Integration
- Intro to RigView
- Intro to LandView

**peloton**  
well focused®

THE INTEGRATED WELL  
LIFECYCLE SOLUTION

## Peloton Technical Papers & Case Studies

Peloton has an inventory of technical papers and case studies available to our clients, and many other papers are in the works. Here is a list of available papers:

- RigView for Scheduling Management
- Tracking Plug & Abandonment Details in WellView
- WellView Connector Plug-In for the Studio E&P Knowledge Environment
- Managing Oilfield Site Costs
- The Integration of WellView & OFM
- Managing Drilling & Fracturing Programs
- Failure Analysis
- Integrating Oilfield Workflows
- Managing Upstream Oil & Gas Production Facilities
- Oilfield Water Management
- Production Optimization Processes

Papers can be requested through Peloton's website within each of our product sections. Case studies can be requested through your Peloton account manager or [sales@peloton.com](mailto:sales@peloton.com).

## Visit Peloton at the Following 2017 Conferences:

- |   |                |                        |
|---|----------------|------------------------|
| ■ Annual NAPE Summit                            | February 15-17 | Houston, TX            |
| ■ SPE Canada Heavy Oil Technical Conference     | February 15-16 | Calgary                |
| ■ SPE Drilling Conference                       | March 14-16    | The Hague, Netherlands |
| ■ CSHM Conference                               | March 21-22    | Calgary                |
| ■ SPE/IADC Middle East Drilling Tech Conference | October 3-4    | Dubai                  |
| ■ SPE Annual Technical Conference               | October 9-11   | San Antonio, TX        |